



SAFEGUARDING CHILD PROTECTION POLICY

2024-2025

-
- **This document has been approved for operation for - Islamiyah Girls High School**
 - **Last Reviewed – September 2024**

Author	Headteacher	Date: February 2024
Reviewed by	Chair of Governors	
Approved		

Date of Next review	<i>Headteacher</i>	<i>AS NEEDED</i>
Publication	<i>Intranet system</i> <i>External Website</i>	

Whole staff Training

Key Staff		
Roles	Names/Details	Contacts
Designated Safeguarding Lead	Zoe Bunting Aisha Sidat	zoe.bunting@islamiyahschoolblackburn.com aisha.sidat@islamiyahschoolblackburn.com
Deputy Designated Safeguarding Lead(s)	Ziarah Ashraf (Deputy Head Mehnaz Kauser (Headteacher)	deputyhead@islamiyahschoolblackburn.com headislamiyahschoolblackburn.com
Designated Operation Encompass lead (where applicable)	Aisha Sidat	aisha.sidat@islamiyahschoolblackburn.com zoe.bunting@islamiyahschoolblackburn.com
Lead governor for safeguarding and child protection	Inam -Ul- Hasan	Inamulhasan5@hotmail.com
Chair of Governors	Nazir Kola	nazkola@hotmail.com

Important contacts

Key External Contacts		
Role	Name/Details	Contact
Police	Blackburn (Greenbank) Police Station	Tel: 01254 353310
Local authority children's social care	Children's Advice and Duty Service (CADS)	Tel: 01254 666400 Email: CYPReferrals@blackburn.gov.uk
Local authority designated officer (LADO)	Jonathan Leniewski Blackburn with Darwen – Emergency Duty Team:	LADO@blackburn.gov.uk 01254 666488 01254 587547 (out of office hours)
Blackburn with Darwen Principal Inclusion Officer (CME /EHE):	Catherine Salt	Catherine.Salt@blackburn.gov.uk 01254 666756
Safeguarding partner's website and any other details of local arrangements		https://www.safeguardingpartnership.org.uk/
Channel/Prevent lead	Leanne Romney	Tel: 01254 585270 Email: leanne.romney@blackburn.gov.uk
Local Children's Centre	Blackburn with Darwen Family Information Service 01254 667877	fis@blackburn.gov.uk 10-12 Ainsworth St Blackburn, BB1 6AD
Blackburn with Darwen – Children's Advice and Duty Service (CADS): 01254 666400		Blackburn with Darwen – Children's Advice and Duty Service (CADS): 01254 666400

Overview

Section 1

School Commitment

The prophet(PBUH) said: "Everyone of you is a shepherd. And everyone is responsible for whatever falls under their responsibility. A person is like a shepherd of their own family, and is responsible for them." (Bukhari and Muslim)

“The true believer is one from whom people are safe with their lives and health”

This policy applies to all adults teaching staff, support, and lunch staff, including Governors, parent helpers, volunteers, supply staff, visitors working on or behalf of Islamaiyah High School (IGHS)as well as young people in the setting.

Part 1 of this policy is for all staff and Governors

Part 2 is principally for use by Designated Safeguarding Staff, senior leadership teams and Trustees.

1. Aims

The school aims to ensure that:

- Appropriate action is taken in a timely manner to safeguard and promote children’s welfare.
- All staff are aware of their statutory responsibilities for safeguarding.
- Staff are properly trained in recognising and reporting safeguarding issues.
- The Trust and staff of Islamaiyah High School (IGHS)(hereinafter referred to as “our school”) take as our priority the responsibility to safeguard and promote the welfare of our pupils, to minimise risk, and to work together with other agencies to ensure rigorous arrangements are in place within our school to identify, assess and support those children who are suffering harm and to keep them safe and secure whilst in our care.
- The responsibilities set out in this policy apply (as appropriate) to all members of the school community including pupils, staff, governors, visitors/contractors, volunteers, and trainees working within the school. It is fully incorporated into the whole school ethos and is underpinned throughout the teaching of the curriculum, within Personal, Social and Health Education (PSHE) and the safety of the physical environment provided for the pupils.

2. Legislation and statutory guidance

- This policy is based on the Department for Education’s statutory guidance, [Keeping Children Safe in Education 2024](#), [Working Together to Safeguard Children \(WTTSC 2018\)](#) and [sexual violence and sexual harassment between children in schools and colleges](#) we comply with this guidance and the procedures set out by our Local Safeguarding Children partnership
- The policy conforms to locally agreed inter-agency procedures and has been developed by Blackburn Education Safeguarding Service and Blackburn Safeguarding Children’s Partners. It is available to all interested parties on

our website and on request from the main school office. It should be read in conjunction with other relevant policies and procedures and Keeping Children Safe in Education.

This policy is also based on the following legislation:

- Part 3 of the schedule to the [Education \(Independent School Standards\) Regulations 2014](#), which places a duty on academies and independent schools to safeguard and promote the welfare of pupils at the school
- [The Children Act 1989](#) (and [2004 amendment](#)), which provides a framework for the care and protection of children
- General Data Protection Act (2019) [Guide to the General Data Protection Regulation - GOV.UK](#)<https://www.gov.uk/government/publications/guide-to-the-general-data-protection-regulation>
- Data Protection Act <http://www.legislation.gov.uk/ukpga/2018/12/contents/enacted> Section 5B(11) of the Female Genital Mutilation Act 2003, as inserted by section 74 of the [Serious Crime Act 2015](#), which places a statutory duty on teachers to report to the police where they discover that female genital mutilation (FGM) appears to have been carried out on a girl under 18
- [Statutory guidance on FGM](#), which sets out responsibilities with regards to safeguarding and supporting girls affected by FGM
- [The Rehabilitation of Offenders Act 1974](#), which outlines when people with criminal convictions can work with children
- Schedule 4 of the [Safeguarding Vulnerable Groups Act 2006](#), which defines what ‘regulated activity’ is in relation to children
- Statutory [Guidance on the Prevent duty](#), which explains schools’ duties under the Counter-Terrorism and Security Act 2015 with respect to protecting people from the risk of radicalisation and extremism
- Guidance for safer working practice for those working with children and young people in education settings ([GSWP](#)) ([Safer Recruitment Consortium May 2019](#))
- Blackburn Safeguarding Children Partnership Procedures-
<https://www.Blackburn.gov.uk/adult-and-childrens-services/child-protection/>
- Children Missing Education – Statutory guidance for local authorities (DfE September 2016)
<https://www.gov.uk/government/publications/children-missing-education>.
- Children Missing Education – Statutory guidance for local authorities (DfE September 2016)
<https://www.gov.uk/government/publications/children-missing-education>
- The [Childcare \(Disqualification\) Regulations 2018](#) and [Childcare Act 2006](#), which set out who is disqualified from working with children

- This policy also meets requirements relating to safeguarding and welfare in the [statutory framework for the Early Years Foundation Stage](#)
- Meeting digital and technology standards in schools and colleges - Cyber security standards for schools and colleges - Guidance - GOV.UK (www.gov.uk)

3. Definitions

Safeguarding and promoting the welfare of children means:

- Protecting children from maltreatment
- Providing help and support to meet the needs of children as soon as problems emerge
- Protecting children from maltreatment, whether that is within or outside the home, including online
- Preventing impairment of children's mental and physical health or development
- Ensuring that children grow up in circumstances consistent with the provision of safe and effective care
- Taking action to enable all children to have the best outcomes.
- **Child protection** is part of this definition and refers to activities undertaken to prevent children from suffering or being likely to suffer, significant harm.
- **Children** include everyone under the age of 18. College students over the age of 18 are supported by adult services when reporting any Safeguarding concerns. Adult services can be contacted via the link below:

<https://www.Blackburn.gov.uk/adult-and-childrens-services/report-abuse-of-a-vulnerable-adult/>

4. Equality statement

Some pupils have an increased risk of abuse, and additional barriers can exist for some pupils with respect to recognising or disclosing it. We are committed to anti-discriminatory practice and recognise pupil's diverse circumstances. We ensure that all pupils have the same protection, regardless of any barriers they may face.

We give special consideration to pupils who:

- Have special educational needs or disabilities.
- Are young carers.
- May experience discrimination due to their race, ethnicity, religion, gender identification or sexuality
- Have English as an additional language.
- Are known to be living in difficult situations – for example, temporary accommodation or where there are issues such as substance abuse or domestic violence

- Are at risk of Female Genital Mutilation (FGM), sexual exploitation, criminal exploitation, forced marriage, or radicalisation.
- Are asylum seekers, refugees or migrants.

5. Roles and responsibilities

Safeguarding and child protection is **everyone's** responsibility. This policy applies to all staff (including those not directly employed by this school), volunteers, and governors in this school. Our policy and procedures also apply to extended school and off-site activities.

1. Governor Responsibilities

- 1.1 Governing bodies and proprietors must have regard to **Keeping Children Safe In Education 2024**, ensuring policies, procedures and training in their schools or colleges are effective and comply with the law at all times.
- 1.2 Governing bodies and proprietors should have a senior board level (or equivalent) lead to take leadership responsibility for their school's or college's safeguarding arrangements.
- 1.3 Governing bodies and proprietors should ensure that all governors and trustees receive appropriate safeguarding and child protection (including online) training at induction.
- 1.4 Governing bodies and proprietors should review the school safeguarding policy annually and complete annual safeguarding training and updates.
- 1.5 Governing bodies and proprietors should ensure that those staff who work directly with children read at least Part one of Keeping Children safe in Education 2024.
- 1.6 Governing bodies and proprietors should be aware of their obligations under the Human Rights Act 1998, the Equality Act 2010, (including the Public Sector Equality Duty), and their local multi-agency safeguarding arrangements.
- 1.7 Governing bodies and proprietors should carefully consider how they are supporting their pupils and students with regard to particular protected characteristics - including age, sex, race, sexual orientation, gender reassignment, religion or belief, pregnancy and disability.
- 1.8 Governing bodies and proprietors should ensure they facilitate a whole school or college approach to safeguarding.
- 1.9 Governing bodies and proprietors should ensure an appropriate senior member of staff, from the school or college leadership team, is appointed to the role of designated safeguarding lead.
- 1.10 Governing bodies and proprietors should ensure the designated safeguarding lead has the appropriate status and authority within the school or college to carry out the duties of the post.
- 1.11 Governing bodies and proprietors should ensure that the school or college contributes to multi-agency working in line with statutory guidance **Working Together to Safeguard Children 2023**.
- 1.12 Governing bodies and proprietors recognise the importance of information sharing between practitioners and local agencies.
- 1.13 Governing bodies and proprietors should ensure that all staff undergo safeguarding and child protection training (including online safety, which amongst other things, includes the understanding

of the expectations, applicable roles, and responsibilities in relation to filtering and monitoring) at induction.

- 1.14 Governing bodies and proprietors should ensure that children are taught about how to keep themselves and others safe, including online.
- 1.15 Governing bodies and proprietors must ensure that appropriate filters and monitoring systems are in place and regularly review the effectiveness of these.
- 1.16 Governing bodies and proprietors should ensure online safety is a running and interrelated theme whilst devising and implementing their whole school or college approach to safeguarding.
- 1.17 Where governing bodies and proprietors hire or rent out school or college facilities/premises to organisations or individuals they should ensure that appropriate arrangements are in place to keep children safe and review the Lettings Policy as a result.
- 1.18 Governing bodies and proprietors should ensure they have clear systems and processes in place for identifying possible mental health problems.
- 1.19 Governing bodies of maintained schools and proprietors of academies must appoint a designated teacher for looked after children.
- 1.20 Governing bodies and proprietors should ensure that those involved with the recruitment and employment of staff to work with children have received appropriate safer recruitment training.

The designated safeguarding lead (DSL) and deputy designated staff:

- Our DSL is **Aisha Siadat and Amina Bunting** The DSL takes lead responsibility for child protection and wider safeguarding including online safety and understanding the filtering and monitoring systems in place.
- During term time, the DSL will be available during school hours for staff to discuss any safeguarding concerns
- *The DSL can also be contacted out of school hours if necessary by email*
- When the DSL is absent, the deputy **Zaira Asharaf** (Deputy Head) or the **headteacher** will act as cover (for example, during out-of-hours/out-of-term activities)

The DSL will be given the time, training, resources and support to:

- Respond to daily Operation Encompass notices when required.
- Provide advice and support to other staff on child welfare and child protection matters.
- Take part in strategy discussions and inter-agency meetings and/or support other staff to do so.
- Contribute to the assessment of pupils.
- Refer suspected cases, as appropriate, to the relevant body (children's social care duty and advice team, Channel programme, and/or police), and support staff to comply with their mandatory reporting duties in cases where Female Genital Mutilation has been identified.
- **Mehnaz Kauser (Headteacher)** will ensure that all staff involved in direct case work of vulnerable pupils, where there are child protection concerns/issues, have access to regular safeguarding supervision.
- The deputy DSL will also keep the Head teacher informed of any issues, and liaise with local authority officers and relevant professionals for child protection concerns as appropriate.
- We will ensure representation at appropriate inter-agency meetings such as Initial and Review Child Protection Conferences, and Planning and Core Group meetings, as well as team around the family meetings (TAF).
- Provide reports as required for meetings. If we are unable to attend a meeting, a written report will be sent. Reports will, wherever possible, be shared with parents/carers at least 24 hours prior to the meeting.

- Where a pupil in school is subject to an inter-agency child protection plan or any multi-agency risk management plan, the designated safeguarding lead will contribute to the preparation, implementation and review of the plan as appropriate.

The full responsibilities of the DSL are set out in Annex C of Keeping Children Safe in Education (KCSiE) – Role of the designated safeguarding lead. All designated safeguarding leads and deputy safeguarding leads must read and comply with this doc.

<https://www.gov.uk/government/publications/keeping-children-safe-in-education--2>

2. DSL Responsibilities

- 2.1 The designated safeguarding lead takes lead responsibility for safeguarding and child protection (including online safety). This is explicit in the DSL's job description.
- 2.2 The designated safeguarding lead will keep detailed, accurate, secure written records of concerns and referrals and understand the purpose of this record-keeping.
- 2.3 When a child leaves the school, the designated safeguarding lead will transfer the child protection file to the new school or college within 5 days.
- 2.4 The designated safeguarding lead liaises with the designated teacher, SENCO, Mental Health Lead/First Aiders, and other staff to ensure those children who are potentially at greater risk are safeguarded effectively.
- 2.5 The designated safeguarding lead will raise awareness of safeguarding throughout school by:
 - Ensuring all staff read and understand this policy and at least Part one of **Keeping Children Safe in Education 2024**.
 - Updating this policy at least annually.
 - Ensure this policy is available publicly.
 - Ensuring that parents know about school's duty to refer suspected cases of abuse.
 - Linking with **DSL networks** and the local authority to make sure staff are aware of any **opportunities for training and increasing knowledge of local agencies available to support children and families**.
- 2.6 The designated safeguarding lead will provide support to staff to carry out their safeguarding duties.
- 2.7 The designated safeguarding lead will liaise closely with other services such as local authority Children's Social Care **and Early Help**.
- 2.8 The designated safeguarding lead (and any deputies) will access and engage with training to provide them with the knowledge and skills required to carry out the role. This training will be updated at least every two years.
- 2.9 The designated safeguarding lead (and any deputies) will undertake Prevent awareness training. This training will be updated in accordance with schools Prevent risk assessment and CSAP advice. See PREVENT Section below.
- 2.10 The designated safeguarding lead (and any deputies) are aware of local procedures for making a Prevent referral. See PREVENT Section below.
- 2.11 The designated safeguarding lead (and deputies) will consider whether children are at risk of abuse or exploitation in situations outside their families.
- 2.12 The designated safeguarding lead or a deputy will always be available, during school hours to discuss safeguarding concerns.

- 2.13 The designated safeguarding lead (and deputies) will lead on liaising with other agencies and setting up an Early Help assessment/CAF as appropriate.
- 2.14 The designated safeguarding lead (and deputies) will take a leading role on cases of child-on-child abuse and liaise with other agencies such as the police and children's social care in determining how to manage such cases.
- 2.15 The designated safeguarding lead will be aware of the local response to sexual violence and sexual harassment between children.

All staff

- All staff will read and understand part 1 and Annex A of the Department for Education's statutory safeguarding guidance, [Keeping Children Safe in Education](#) (KCSiE) and review this guidance at least annually

All staff will be aware of:

- Our systems that support safeguarding, including Guidance for Safer Working Practice, the role of the designated safeguarding lead (DSL), the behaviour policy, and the safeguarding response to pupils who go missing from education.
- The early support process and their role in it, including identifying emerging problems, liaising with the DSL, and sharing information with other professionals to support early identification and assessment.
- The process for making referrals to Blackburn Council children's services duty and advice and for statutory assessments that may follow a referral, including the role they might be expected to play. (Fig 1 page 10) illustrates the procedure to follow if you have concerns about a child's welfare. Wherever possible, speak to the DSL, deputy DSL, or head teacher (in the absence of a DSL) first to agree on a course of action. In the absence of a DSL or head teacher being available, staff must not delay in directly contacting the duty and advice team or the police if they believe a child is at immediate risk of significant harm.
- We work in partnership with other agencies in the best interests of the children. Requests for service to children's social care duty and advice team should (wherever possible) be made by the designated safeguarding lead. Where a pupil already has a child protection social worker, we will immediately contact the social worker involved or in their absence, the team manager of the child protection social worker.
- What to do if they identify a safeguarding issue or a pupil tells them they are being abused or neglected, including specific issues such as female genital mutilation (FGM), and how to maintain an appropriate level of confidentiality while liaising with relevant professionals.
- In school procedures for recording any cause for concerns and passing information on to DSLs in accordance with school's recording systems.

• Staff Responsibilities

- All staff working with children are advised to maintain an attitude of 'it could happen here'. In a school setting, outside of a direct (child or parent) or indirect disclosure (3rd party raising concerns), indicators of unmet need, welfare concerns, abuse or neglect will demonstrate in a child's attainment, behaviour and/or attendance.
- All staff will read at least Part one of Keeping Children Safe in Education 2023 and demonstrate their understanding in their practice.
- All staff will contribute to a safe environment in which children can learn.
- All staff are able to identify children who may benefit from early help, be aware of their local early help process and understand their role in it.
- All staff are expected to complete safeguarding induction.
- All staff are expected to attend annual safeguarding training relevant to their role.
- All staff should be aware of the process for making referrals to local authority children's social care, through Children's Advice and Duty Service (CADS).
- All staff should be aware of the process for statutory assessments under the Children Act 1989, especially section 17 (children in need) and section 47 (a child suffering, or likely to suffer, significant harm) that may follow a referral, along with the role they might be expected to play in such assessments.
- All staff should know what to do if a child tells them they are being abused, exploited, or neglected.
- Staff should know how to manage the requirement to maintain an appropriate level of confidentiality.
- All staff should be able to reassure victims that they are being taken seriously and that they will be supported and kept safe.
- All staff should be aware that children may not feel ready or know how to tell someone that they are being abused, exploited, or neglected, and/or they may not recognise their experiences as harmful.
- All staff should be aware that technology is a significant component in many safeguarding and wellbeing issues.
- All staff should be aware that children can abuse other children (often referred to as child-on-child abuse) and should challenge inappropriate behaviours between children that are abusive in nature.
- All staff should be aware that mental health problems can, in some cases, be an indicator that a child has suffered or is at risk of suffering abuse, neglect or exploitation.
- All staff should be aware of the indicators that make children more vulnerable to risk e.g. SEND, gender orientation.
- All staff should be aware of the indicators, which may signal children are at risk from, or are involved with, serious violent crime.
- All staff should have the skills, knowledge and understanding to keep looked after children and previously looked after children safe.
- All staff and volunteers should raise concerns about poor or unsafe practice and potential failures in the school's or college's safeguarding regime.

The Head Teacher

The head teacher is responsible for the implementation of this policy, including:

- Ensuring that staff (including temporary staff) and volunteers are informed of this policy as part of their induction.
- Communicating this policy to parents when their child joins the school and via the school website.
- Ensuring that the designated safeguarding lead has appropriate time, training and resources, and that there is always adequate cover if the DSL is absent.
- Ensuring that all staff undertake appropriate safeguarding and child protection training and update this regularly.
- Acting as the 'case manager' in the event of an allegation of abuse made against another member of staff or volunteer, where appropriate
- Ensuring the relevant staffing ratios are met, where applicable
- Making sure each child in the Early Years Foundation Stage is assigned a key person.

Fig 1 Summary of School Procedure to Follow Where There Are Concerns about a Child

All staff must report any concerns about a pupil/student to the named school DSL

3. Curriculum

- 3.1 Children will be taught about how to keep themselves and others safe, including online.
- 3.2 Our curriculum will be tailored to the specific needs and vulnerabilities of individual children, including children who are victims of abuse, and children with special educational needs or disabilities.
- 3.3 pupils will receive Relationship and Sex Education which includes explicit, age appropriate teaching about healthy and respectful relationships, boundaries, consent and self-esteem and body image.
- 3.4 All pupils will receive Health Education which teaches them how to keep physically and mentally healthy.
- 3.5 This education will be fully inclusive and developed to be age and stage of development appropriate (especially when considering the needs of children with SEND and other vulnerabilities.)
- 3.6 When planning the curriculum, online safety should be considered as part of a whole school approach to keeping children safe online.
- 3.7 **LGBTQ+** inclusion is part of the statutory Relationships Education, Relationship and Sex Education and Health Education curriculum and should therefore be included.
- 3.8 We actively promote the **Fundamental British Values (FBV)** of democracy, rule of law, individual liberty, mutual respect and tolerance of those with different faiths and beliefs throughout our curriculum.

4. Safeguarding Induction and Training

- 4.1 All staff will undergo safeguarding training (including, domestic abuse, neglect, Prevent, CSE, CCE, contextual safeguarding and online safety) and information governance at induction

4.2 Induction will include:

- An explanation of systems within their school or college which support safeguarding
- This safeguarding and child protection policy
- The school behaviour policy
- Staff behaviour policy / code of conduct
- The schools safeguarding response to children who go missing from education
- Role of the designated safeguarding lead (including the identity of the designated safeguarding lead and any deputies).

4.3 Prevent training will be included in staff induction. Prevent training is available via BWD melearning and sessions are available to book via The Prevent Team. It is recommended that staff complete the face to face Prevent training as delivered by the Prevent Team as it provides more bespoke education guidance and local information.

4.4 All staff will receive Prevent awareness training in accordance with Home Office advice or as informed by the school's Prevent risk assessment /PREVENT policy. This will be updated at least biennially.

<https://www.elearning.prevent.homeoffice.gov.uk/edu/screen1.html>

https://assets.publishing.service.gov.uk/government/uploads/system/uploads/attachment_data/file/439598/prevent-duty-departmental-advice-v6.pdf

4.5 Copies of the above policies along with a copy of Part One of Keeping Children Safe in Education will be available at all times for staff.

4.6 All staff will receive regular (at least annually) and relevant safeguarding and child protection training, including online safety, and regular updates to provide relevant skills and knowledge to safeguard children effectively.

4.7 All governors and trustees will receive appropriate safeguarding and child protection (including online) training at induction. This training should equip them with the knowledge to provide strategic challenge to test and assure themselves that the safeguarding policies and procedures in our school are effective and support the delivery of a robust whole school approach to safeguarding. This training will be regularly updated.

4.8 In addition, governors should also attend bespoke governor Prevent training which is provided by BwD governor services.

4.9 All those involved with the recruitment and employment of staff to work with children will receive appropriate safer recruitment training, the substance of which should at a minimum cover the content of Part three of Keeping Children Safe in Education. At least one member of any interview panel must have completed this training.

4.10 The designated safeguarding lead (and any deputies) will undergo training to provide them with the knowledge and skills required to carry out the DSL role. This training will be updated at least every two years.

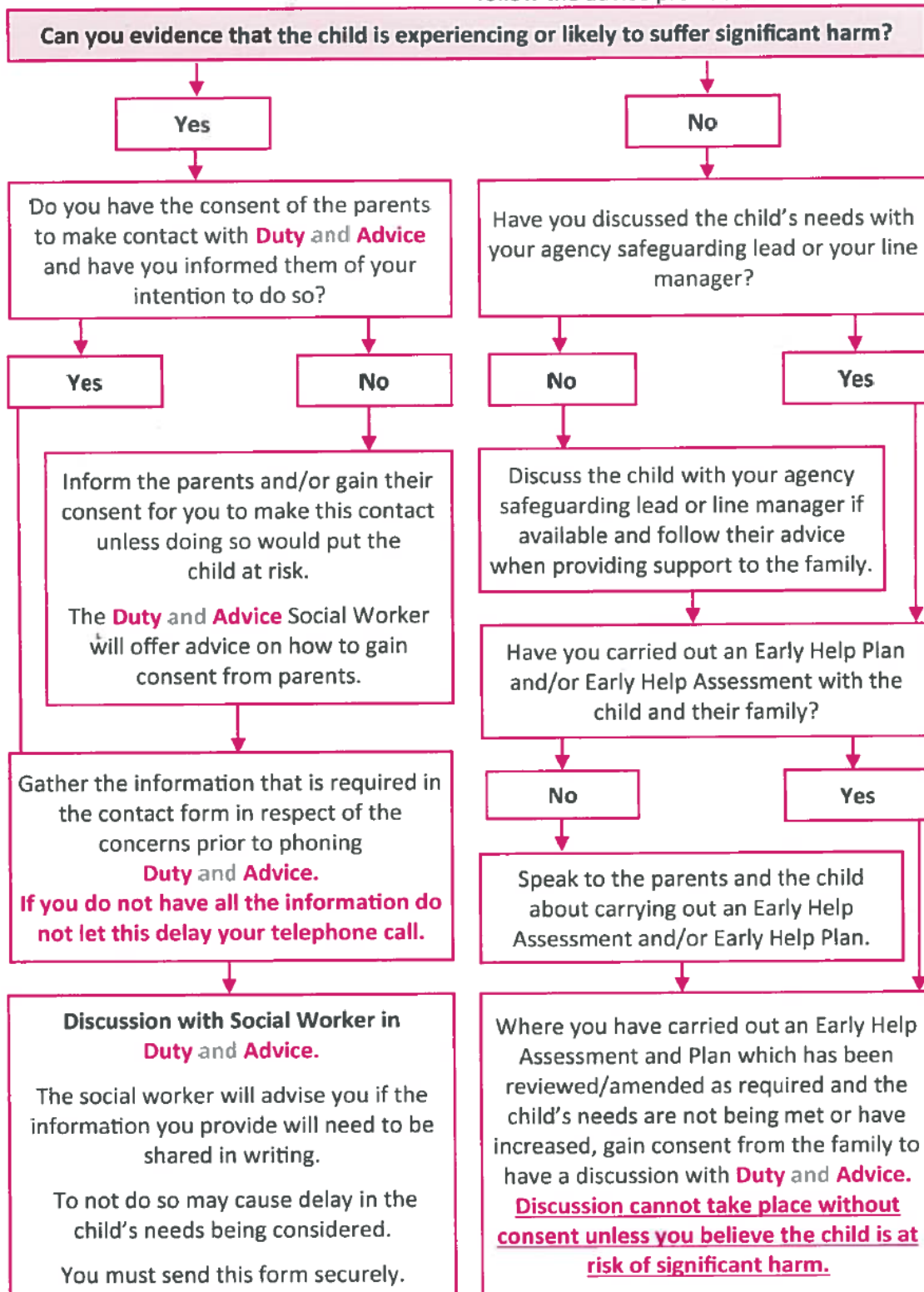
4.11 In addition to this formal training the designated safeguarding leads' (and any deputies') knowledge and skills should be refreshed at regular intervals, as required, and at least annually, to allow them to understand and keep up with any developments relevant to their role, and the community.

4.12 The designated safeguarding lead (and any deputies) will undertake Prevent awareness training.

4.13 DSLs will receive training that enables them to have a good understanding of Harmful Sexual Behaviour.

Flowchart

Before contacting the **Duty** and **Advice** Team and completing a contact form, please answer the following questions and follow the advice provided:



6. Confidentiality

- Confidentiality is an issue that needs to be understood by all those working with pupils particularly in the context of safeguarding.
- This School recognises that the only purpose of confidentiality in this respect is to benefit the pupil. Staff, volunteers, and visitors to school should never promise a pupil that they will not tell anyone about an allegation or disclosure and must pass any cause for concerns immediately to a designated safeguarding lead.
- Confidentiality is addressed throughout this policy with respect to record-keeping (section 12), dealing with disclosure (Appendix 2), allegations of abuse against staff (section 11), information sharing and working with parents (section 6)

Record Keeping, Information sharing and GDPR

- Timely information sharing is essential for effective safeguarding. School staff will be proactive in sharing information as early as possible to help identify, assess, and respond to risks or concerns about the safety and welfare of children, whether this is when problems are first emerging, or where a child is already known to the local authority children's social care.' This school will share safeguarding information as appropriate in keeping with the principles outlined in the government guidance document, [Information sharing: Advice for practitioners providing safeguarding services to children, young people, parents and carers \(DfE 2018\)](#). This guidance has been produced to support practitioners in the decisions they take to share information, which reduces the risk of harm to children and young people and promotes their well-being.
- All concerns, discussions and decisions made, and the reasons for those decisions, will be recorded in writing or electronically. Information will be kept confidential and stored securely. Records will include;
 1. A clear comprehensive summary of the concern.
 2. Details of how the concern was followed up and resolved.
 3. A note of any action taken, decisions reached and the outcome.
- The storing and processing of personal data is governed by the General Data Protection Regulations 2017 (GDPR) and Data Protection Act 2018. This school will give clear advice to staff about their responsibilities under this legislation so that, when considering sharing confidential information, those principles should apply.
- Staff may have access to special category personal data about pupils and their families which must be kept confidential at all times and only shared when legally permissible to do so and in the interest of the child. Records should only be shared with those who have a legitimate professional need to see them.

Working with parents and other agencies to protect children

Parents/carers should be aware that our school will take any reasonable action to safeguard the welfare of its pupils. In cases where the school has reason to be concerned that a child may be suffering significant harm, ill treatment or neglect, or other forms of harm, staff have no alternative but to follow the Blackburn Council Safeguarding Children's Partnership procedures and contact the duty and advice team to discuss their concerns

In keeping with Keeping Children Safe in Education (KCSiE) and Children missing education: statutory guidance for local authorities. We will endeavour wherever possible to obtain at least two emergency contacts for every child in the school in case of emergencies, and in case there are welfare concerns at the home

In general, we will discuss concerns with parents/carers before approaching other agencies and will seek to inform parents/carers and receive their consent when making a referral to another agency.

Appropriate staff will approach parents/carers after consultation with the designated safeguarding lead. The exception to this rule will be in situations where a member of staff has reasonable cause to believe that informing parents/carers of a referral to another agency may increase the risk of significant harm to the pupil.

Parents/carers are informed about our safeguarding policy through school prospectus, website, newsletters etc. A safeguarding and child protection statement is prominent in the school foyer/reception area.

Multi-agency work

We will co-operate with Blackburn Council Safeguarding Children Partnership in accordance with the requirements of the Children Act and allow access to pupil and child protection records for them to conduct section 17 or section 47 assessments.

In the best interests of our pupils, we will work with all relevant professionals and agencies as required to safeguarding children and promote their welfare.

7. Our role in the prevention of abuse

- Apex Academy plays a crucial role in preventative education. Preventative education is most effective in the context of a whole-school or college approach that prepares pupils and students for life in modern Britain and creates a culture of zero tolerance for sexism, misogyny/misandry, homophobia, biphobic and sexual violence/harassment, discrimination and prejudice linked to fundamental values.
- We will identify and provide opportunities for children to develop skills, concepts, attitudes, and knowledge to promote their safety and well-being.

The curriculum

1. This school understands the importance of delivering an effective safeguarding curriculum which includes:
2. Healthy and respectful relationships.
3. Boundaries and consent.
4. Stereotyping, prejudice, and equality.
5. Body confidence and self-esteem, wellbeing and resilience.
6. How to recognise an abusive relationship, including coercive and controlling behaviour.

7. The concepts of, and laws relating to, sexual consent, sexual exploitation, abuse, grooming, coercion, harassment, rape, domestic abuse, so called honour-based violence such as forced marriage and Female Genital Mutilation (FGM), and how to access support.

What constitutes sexual harassment and sexual violence and why these are always unacceptable.

We will identify and provide opportunities for children to develop skills, concepts, attitudes and knowledge to promote their safety and well-being.

In KCSiE the development of a safeguarding culture is emphasised. Paragraph 82 says, 'governing bodies and proprietors should ensure they facilitate a whole school or college approach to safeguarding. This means ensuring safeguarding and child protection are at the forefront and underpin all relevant aspects of process and policy development. Ultimately, all systems, processes and policies should operate with the best interests of the child at their heart.' Other new paragraphs in KCSiE reinforce this: 'Good safeguarding requires a continuing commitment from governing bodies, proprietors, and all staff to ensure the safety and welfare of children is embedded in all of the organisation's processes and procedures, and consequentially enshrined in its ethos.' (Paragraph 324)

As such safeguarding will permeate every aspect of school life. Relevant issues will be addressed through Relationships Education (for all primary schools) and Relationships and Sex Education for all secondary pupils and health education (for all pupils in state funded schools) is mandatory from September 2020. All children should be safeguarded from potentially harmful and inappropriate online material (online bullying, sexting, child sexual exploitation (CSE), child criminal exploitation (CCE), gangs, youth generated images, female genital mutilation (FGM), preventing radicalisation, peer on peer abuse and anti- bullying

Relevant issues will be addressed through all areas of the curriculum. For example, circle time, assemblies, Tarbiyah lessons, English, History, PHSCE, RS and Art.

Online safety

Our named designated safeguarding lead takes responsibility for ensuring that this schools filtering and monitoring systems remain effective by overseeing and acting on:

- filtering and monitoring reports
- safeguarding concerns
- checks to filtering and monitoring systems.

The system/process is checked and reviewed at least annually to ensure this school meets the DFE guidance 'Meeting digital and technology standards for schools and colleges'. For many adults, there is a separation in their minds between 'real life' and the 'online world'. This is a dangerous misconception, as the connected world embraces both online and offline; for young people there is no separation. Paragraph 24 says, 'All staff should be aware that technology is a significant component in many safeguarding and wellbeing issues. Children are at risk of abuse online as well as face to face. In many cases abuse will take place concurrently via online channels and in daily life. Children can also abuse their peers online, this can take the form of abusive, harassing, and misogynistic messages, the non-consensual sharing of indecent images, especially around chat groups, and the sharing of abusive images and pornography, to those who do not want to receive such content.

This School is committed to meeting the requirement to keep pupils safe when using technology. We believe the whole school community can benefit from the opportunities provided by the internet and other technologies used in everyday life.

The school's online Safety Policy supports this by identifying the risks and the steps we are taking to avoid them. The breadth of issues classified within online safety is considerable, but can be categorised into four areas of risk:

Content: being exposed to illegal, inappropriate, or harmful content; for example pornography, fake news, racism, misogyny, self harm, suicide, anti-semitism, radicalisation and extremism

Contact: being subjected to harmful online interaction with other users; for example peer to peer pressure, commercial advertising and adults posing as children or young adults with the intention to groom or exploit them for sexual, criminal, financial, or other purposes

Conduct: personal online behaviour that increases the likelihood of, or causes, harm; for example making, sending, and receiving explicit images (e.g consensual and non-consensual sharing of nudes and semi-nudes and/or pornography, sharing other explicit images) and online bullying;

Commerce; risks such as online gambling, inappropriate advertising, phishing, and/or financial scams

Our schools expectations for responsible and appropriate conduct are set out in the school online safety policy and acceptable use policies (AUP) which we expect all staff, visitors and pupils to follow.

Meeting digital and technology standards in schools and colleges - Cyber security standards for schools and colleges - Guidance - GOV.UK (www.gov.uk)

Our School has a Mobile policy where are students are allowed to bring phones to school but must be switched off during school hours. If students breach this rule then the phone will be confiscated and will need to be collected by a parent/guardian from the school office at the end of day.

All online safety concerns should be reported to the DSL.

An annual review will be carried out to determine the school's approach to online safety. This will be supported by an online risk assessment that considers and reflects the risks that children face.

Other areas of work

All our policies that address issues of power and potential harm, e.g. Anti- Bullying, Equal Opportunities, Positive Handling, Behaviour, will be linked to ensure a whole school approach.

Our Safeguarding and Child Protection policy cannot be separated from the general ethos of the school which ensures that children are treated with respect and dignity, feel safe, and are listened to

Safeguarding incidents and/or behaviors can be associated with factors outside the school or college and can occur between pupils outside the school or college. All staff, but especially the designated safeguarding lead and deputy designated safeguarding lead will consider the context within which such incidents and behaviors occur. This is known as Contextual Safeguarding, which simply means assessments of children should consider whether wider environmental factors are present in a child's life that are a threat to their safety and welfare.

8. Our role in supporting children

We will offer appropriate support to individual children who have experienced abuse or who have abused others

In cases where pupils have experienced abuse/abused others, the designated safeguarding lead should ensure that appropriate support is offered. An individual risk assessment will be devised, implemented, and reviewed regularly should the pupil (victim, perpetrator, of other child affected) require additional pastoral support/intervention.

Our staff are aware that children may not feel ready or know how to tell someone that they are being abused, exploited, or neglected, and/or they may not recognise their experiences as harmful. For example, children may feel embarrassed, humiliated, or threatened. This could be due to their vulnerability, disability, cultural expectations and/or sexual orientation or language barriers. This will not prevent our staff from having a professional curiosity and speaking to the DSL if they have concerns about a child. This school will determine how best to build trusted relationships with children and young people which facilitate communication.

Early Support

If we identify additional unmet needs for a pupil that does not require intervention by social workers, then in the first instance it may be beneficial to speak to the **casework consultant linked to our community hub**. They can advise us whether family support may be required, this may help us to understand what support we can offer if we complete an Early Support Assessment (ESA). The Early Support Assessment should be a tool in its own right and not a referral mechanism.

For pupils, whose needs and circumstances make them more vulnerable, a coordinated multi-disciplinary approach is usually best, based on an **Early Support Assessment**, with a Lead Practitioner to work closely with the child and family to ensure they receive the right support.

When we complete an Early Support Assessment

- The information required to evidence that more targeted or statutory services are needed will be better informed by a good quality assessment having been carried out
- If it is not clear who is best placed to provide the support an early support assessment (ESA) will be requested before accepting a referral
- If additional support is required from the Early Support Service, then a referral will be accepted without an early support assessment (ESA) to prevent delay in offering support ([Appendix 12](#))
- Monitoring of referrals made without assessments will be routinely reported to the Blackburn Safeguarding Children Partnership to promote improvement in assessment practice within all partner agencies
- If the referral is relating to a family where there is an existing team around the family meeting (TAF) an early support assessment (ESA) should have already been completed and should be included with the referral

<https://www.Blackburn scp.org.uk/professionals/early-help/#:~:text=The%20Service%20can%20be%20contacted,%E2%80%93%20Referral%20Form%20%5BNovember%202023%5D>

Children in Specific Circumstances

We recognise that all children can be at risk of abuse however we acknowledge that some groups are more vulnerable, this can include:

- the experience of abuse within their family.
- young people in care.
- children who go missing.

- children with additional needs (SEN and/or disabilities).
- children who identify as LGBTQ+ and/or have other protected characteristics under the Equalities Act 2010.
- children living with domestic violence or drug/alcohol abusing parents

This school recognises that while all pupils have a right to be safe, some pupils *may* be more vulnerable to abuse e.g. those with a disability or special educational need, those living with domestic violence or drug/alcohol abusing parents, etc

This school follows the Blackburn Safeguarding Children Partnership online multi-agency procedures and will, where necessary, have due regard to the government guidance for children in specific circumstances as outlined in Part 1 and Annex A of Keeping Children Safe in Education (KCSiE).

Female Genital Mutilation (FGM) the Mandatory Reporting Duty

- The Department for Education’s Keeping Children Safe in Education explains that FGM comprises “all procedures involving partial or total removal of the external female genitalia or other injuries to the female genital organs”
- FGM is illegal in the UK and a form of child abuse with long-lasting, harmful consequences. It is also known as ‘female genital cutting’, ‘circumcision’ or ‘initiation’.
- **Any teacher** who discovers that an act of FGM appears to have been carried out on a **pupil under 18** will immediately (in consultation with the designated safeguarding lead) report this to the police, personally. This is a statutory duty, and teachers will face disciplinary sanctions for failing to meet it
- The duty above does not apply in cases where a pupil is *at risk* of FGM or FGM is suspected but is not known to have been carried out. Staff will not examine pupils
- **Any other member of staff** who discovers that an act of FGM appears to have been carried out on a **pupil under 18** will speak to the designated safeguarding lead and follow our local safeguarding procedures
- **Any member of staff** who suspects a pupil is *at risk* of FGM or discovers that a **pupil age 18 or over** appears to have been a victim of FGM] will speak to the DSL and follow our local safeguarding children’s partnership procedures

Honour- based abuse (including forced marriage)

School recognise that Honour-based abuse (HBA) encompasses incidents of crimes that have been committed to protect or defend the honour of the family and/or the community. Abuse committed in this context often involves a wider network of family or community pressure and can involve multiple perpetrators. If staff in our school have a concern regarding a pupil that might be at risk of HBA or who has suffered from HBA they will immediately speak to the designated safeguarding lead who will follow the schools safeguarding procedures. For every crime committed there are also numerous incidents of bullying, emotional and psychological abuse. Some victims have very restricted movements and are under constant

supervision having little contact with the outside world.

Crimes committed may include:

- False imprisonment or kidnap
- Domestic servitude
- ABH or GBH
- Threats to kill
- Harassment and stalking
- Sexual assault
- Rape
- Female genital mutilation
- Forced to commit suicide.
- Murder
- Forced Marriage- **since February 2023 it has also been a crime to carry out any conduct whose purpose is to cause a child to marry before their eighteenth birthday, even if violence, threats or another form of coercion are not used. As with the existing forced marriage law, this applies to non-binding, unofficial ‘marriages’ as well as legal marriages)**

Further information and resources can be found via the links below:

<https://www.Blackburn scp.org.uk/professionals/forced-marriage/>

Preventing Radicalisation

Children may be susceptible to extremist ideology and radicalisation.

Similar to protecting children from other forms of harms and abuse, protecting children from this risk should be a part of a schools or colleges safeguarding approach.

Extremism is the vocal or active opposition to our fundamental values, including democracy, the rule of law, individual liberty and the mutual respect and tolerance of different faiths and beliefs. This also includes calling for the death of members of the armed forces.

- Radicalisation refers to the process by which a person comes to support terrorism and extremist ideologies associated with terrorist groups.
- Terrorism is an action that endangers or causes serious violence to a person/people; causes serious damage to property; or seriously interferes or disrupts an electronic system. The use or threat must be designed to influence the government or to intimidate the public and is made for the purpose of advancing a political, religious or ideological cause.
- For further information on this subject please refer to Keeping Children Safe in Education (2023).

Radicalisation is defined as the process by which people come to support terrorism and violent extremism and, in some cases, to then participate in terrorist groups. For further information on this subject please refer to Keeping Children Safe in Education (2023)

Responding to concerns about radicalisation

- If staff are concerned about a change in the behaviour of an individual or see something that concerns them (**this could be a colleague too**) they will follow the NOTICE, CHECK, SHARE principles and seek advice appropriately with the designated safeguarding lead who will contact The Prevent Hub – 01924 483747 for further advice ([appendix 8](#))
- We will assess the risk of pupils being drawn into terrorism, including support for extremist ideas that are part of terrorist ideology. This means being able to demonstrate both a general understanding of the risks affecting pupils in the area and a specific understanding of how to identify individual pupils who may be at risk of radicalisation and what to do to support them. The Prevent hub will advise us and identify local referral pathways
- Effective early support relies on all our staff to be vigilant and aware of the nature of the risk for pupils and what support may be available. Our school will ensure that as far as possible all front-line staff will undertake Prevent awareness training (e.g. Workshop to Raise Awareness of Prevent [WRAP]) will share information on the National and Local (Blackburn) context, Extremist signs and symbols, propaganda and upskill staff in identifying and responding to Prevent concerns in line with the NOTICE, CHECK, SHARE principles Introducing the notice, check, share procedure | Prevent duty training (support-people-vulnerable-to-radicalisation.service.gov.uk)
- For more information about Prevent in Ilford ,including referral forms and project examples please visit the [https://Blackburn .gov.uk/crime-and-public-safety/anti-terrorism-prevent-and-channel/](https://Blackburn.gov.uk/crime-and-public-safety/anti-terrorism-prevent-and-channel/)

Child on Child abuse: Sexual violence and sexual harassment between children in schools and colleges

- We recognise that pupils can abuse their peers and that child on child abuse can manifest in many ways, including physical abuse, prejudice-based and discriminatory bullying, on-line bullying, youth produced imagery (sexting), abuse in intimate personal relationships between peers, criminal and sexual exploitation, upskirting, initiation and inappropriate harmful sexualised behaviours, and that it could happen here. It is very clear that this abuse should always be treated seriously, and never just as banter, having a laugh or part of growing up. School have a zero tolerance approach to sexual violence and sexual harassment and it is never acceptable and it will not be tolerated in this school and will be challenged. School recognise that even if there are no reports in our school it does not mean it is not happening therefore school will promote an ongoing culture of vigilance to create a safe for children. **Any concerns around child on child abuse must be reported and recorded in line with the child protection procedures outlined in this policy and reported to the designated safeguarding lead or deputy as soon as possible.** It should be noted Upskirting became a criminal offence in April 2019 and any such incidents, in line with this policy should be treated as such. Upskirting typically involves taking a picture under a person's clothing without them knowing, with the intention of viewing their genitals or buttocks to obtain sexual gratification, or cause the victim humiliation, distress or alarm. The designated safeguarding lead is responsible for responding to such concerns in keeping with Blackburn Safeguarding Children Partnership protocols. The designated safeguarding lead is responsible for providing support to any victims, and the perpetrators
- Where pupils have exhibited inappropriate/harmful sexualised behaviour and/ exhibited inappropriate harmful sexualised behaviours towards others, **the KSCP Harmful Sexual Response Checklist and The Hackett Harmful Sexual Behaviour Framework** will be used, and contact made with duty and advice, police, or early support if appropriate ([Appendix 7](#)). School may choose to manage the incident or concern internally if

appropriate depending on the nature and the child/children involved through the behaviour policy and pastoral support. In all cases the decisions and reasons for decisions will be recorded

- School will ensure that **all** victims are reassured that they will be taken seriously regardless of how long it has taken them to come forward and that they will be supported and kept safe. All staff will be trained to manage reports of harmful Sexual Behaviour

In the event of a disclosure or report school will:

- Listen carefully, reflecting back using the child's language
- Reassure the child that this will be taken seriously
- Ask open-ended questions
- Not promise confidentiality
- Inform the designated lead or deputy as soon as practically possible if either the DSL or DDSL is not involved in the initial report
- A written record of the facts will be made
- School will consider whether electronic devices will need to be confiscated at this point
- The school will consider the wishes of the victim and how they would like to proceed, giving the victim as much control as possible in line with school safeguarding arrangements

The school will ensure that the needs of pupils who abuse others will be considered separately from the needs of their victims and give immediate consideration as to how best to support and protect the victim and the alleged perpetrator(s). A co-ordinated multi-agency approach will take place through a risk assessment management plan (RAMP) to respond to their needs which will include parent/carers, youth justice, police (where appropriate), children's social work service, and health which will be kept under review.

Further information and guidance can be found in our school's Child-on-child abuse policy which all school staff are expected to follow.

Harmful Sexual Behaviour (HSB) - <https://www.Blackburn scp.org.uk/professionals/harmful-sexual-behaviours/>

Nude and Semi Nude Images

Given the high-frequency sharing of nude and semi-nude images, KCSIE says 'Consensual image sharing, especially between older children of the same age, may require a different response. It might not be abusive - but children still need to know it is illegal - whilst non-consensual is illegal and abusive. UKCIS provides detailed advice about sharing of nudes and semi-nude images and videos.'

Additional guidance:

https://assets.publishing.service.gov.uk/government/uploads/system/uploads/attachment_data/file/999239/SVSH_2021.pdf

Mental Health

We will ensure that we have clear systems and processes in place for identifying children in need of extra mental health support, this will include working with external agencies. All staff should be aware that mental health problems can in some cases be an indicator that a child has suffered or is at risk of suffering abuse, neglect, or exploitation. Where children have suffered abuse and neglect, or other potentially traumatic adverse childhood experiences, this can have a lasting impact throughout childhood, adolescence, and adulthood. This school is aware of how these children's experiences, can impact their mental health, behaviour, and education and progress at school.

If staff have mental health concerns about a child that is also a safeguarding concern immediate action will be taken, following the child protection procedure and speaking to the designated safeguarding lead or a deputy

Additional guidance

[Mental health and behaviour in schools - GOV.UK](#)

Child Sexual Exploitation (CSE) and Child Criminal Exploitation: (CCE):

Both child sexual exploitation and criminal exploitation are forms of Abuse. It occurs where an individual or group takes advantage of an imbalance of power to coerce, manipulate or deceive a child into sexual or criminal activity. Whilst age may be the most obvious this power imbalance can also be due to a range of other factors including gender, sexual identity, cognitive ability, physical strength, status, and access to economic or other resources. In some cases, the abuse will be in exchange for something the victim needs or wants and/or will be to the financial benefit or other advantages (such as increased status) of the perpetrator or facilitator in exchange for something the victim needs or wants and/or will be for the

financial advantage or increased status of the perpetrator or facilitator. The abuse can be perpetrated by individuals or groups males or females and children or adults. The abuse can be a one-off occurrence or a series of incidents over time and range from opportunistic to complex organised abuse

It can involve force and/or enticement-based methods of compliance and may or may not be accompanied by violence or threats of violence. Victims can be exploited even when activity appears consensual and it should be noted exploitation as well as being physical can be facilitated and/or take place online.

Reference: Child Sexual Exploitation. *Definition and a guide for practitioners, local leaders and decision makers working to protect children from child sexual exploitation* (<https://www.gov.uk/government/publications/child-sexual-exploitation-definition-and-guide-for-practitioners>) where child sexual exploitation, or the risk of it, is suspected, frontline practitioners should pass the information onto the designated member of staff for child protection

The designated safeguarding lead will complete the Child Exploitation Partnership Assessment and Decision –making Tool (Appendix 6) and refer to the table at the end of the tool to help decide how to proceed. A copy of the completed tool will be kept in the child's child protection records for future reference

If the child /young person already has an allocated social worker, the designated safeguarding lead will contact them (or

their team manager) to discuss any concerns about sexual exploitation

A copy of the Child Exploitation Partnership Assessment and Decision- making Tool can be obtained from the Website:

[Child Exploitation - https://www.Blackburn.gov.uk/adult-and-childrens-services/child-protection/#:~:text=What%20to%20do%20if%20you,young%20person%20is%20being%20abused&text=During%20the%20evening%20or%20at,is%20to%20report%20your%20concerns](https://www.Blackburn.gov.uk/adult-and-childrens-services/child-protection/#:~:text=What%20to%20do%20if%20you,young%20person%20is%20being%20abused&text=During%20the%20evening%20or%20at,is%20to%20report%20your%20concerns).

We will ensure that this school will work in partnership with parents/carers and other agencies as appropriate. This includes facilitating return to home interviews as requested

Indicators to look out for are:

- Appear with unexplained gifts, money, or new possessions
- Associate with other children involved in exploitation
- Suffer from changes in emotional well-being
- Misuse of drugs and alcohol
- Go missing for periods of time or regularly come home late
- Regularly miss school or education or do not take part in education

Specific indicators that may be present in CSE are children who:

- Have older boyfriends
- Suffer from sexually transmitted infections, display sexual behaviours beyond expected sexual development or become pregnant

Young people who are victims of CCE include those who are:

- Trafficked within the UK with the intention of being used to commit criminal acts that benefit the trade of drugs and criminal gangs
- Coerced into the supply, transporting, and dealing of class A drugs. They may be doing this within their local area, however, they are often crossing one or more police force or local authority boundaries
- Coerced into carrying drugs, weapons, and money to assist in the trade and movement of drugs

CCE often occurs without the child's immediate recognition, and with the child believing they are in control of the situation. In all cases, those exploiting the child/young person have power over them by virtue of their age, gender, intellect, physical strength. Violence, coercion and intimidation are common, involvement of exploitive relationships being characterised in the main by the child/young person's availability of choice resulting from their social/economic and/or emotional vulnerability. The experience of girls who are criminally exploited can be very different from that of boys. The indicators may not be the same, however, we are aware that girls are at risk of criminal exploitation too. We also recognise that both boys and girls being criminally exploited may be at higher risk of sexual exploitation

Serious Violence

- School recognise when children may be at risk from/or involved with a serious violent crime by recognising the indicators such as:
 1. Increased absence from school
 2. A change in friendship or relationships with older individuals or groups
 3. A decline in performance
 4. Signs of self-harm or a significant change in wellbeing
 5. Signs of assault or unexplained injuries
 6. Unexplained gifts or new possessions
- School recognise the risk factors which increase the likelihood of involvement in serious violence such as:
 1. Being male
 2. Having been frequently absent or permanently excluded from school
 3. Having experienced child maltreatment
 4. Having been involved in offending, such as theft or robbery

[County lines: criminal exploitation of children and vulnerable](#)

[Preventing youth violence and gang involvement - GOV.UK](#)

Private Fostering

- Private fostering is when a child under the age of 16 (under 18 if disabled) is cared for by someone who is not their parent or a 'close relative'. This is a private arrangement made between a parent and a carer for 28 days or more. Close relatives are defined as stepparents, grandparents, brothers, sisters, uncles, or aunts (whether of full blood, half-blood, or by marriage). Great grandparents, great aunts, great uncles, and cousins are not regarded as close relatives
- The law requires us to notify duty and advice if anyone is looking after someone else's child for 28 days or more. The purpose of the council's involvement is to support the pupil and private foster family (and wherever possible the biological parent/s) with any issues arising. These may be practical issues such as benefits, housing, immigration, or emotional issues such as keeping contact with biological family, maintaining cultural identity
- If we become aware of a child in a private fostering arrangement within Ilford, we will notify duty and advice

Children looked after and previously looked after Children and children with a social worker

- All our staff recognise that children looked after previously looked after children (whether they are looked after under voluntary arrangements with consent of parents or on an interim or full care order) and care leavers and children with a social worker are more vulnerable than other children, often having poorer educational outcomes; therefore, ensuring their wellbeing, safety and welfare, helping them to reach their potential which includes the looked after child who is moving on. The school/college will also ensure that care leavers are supported with pathways including liaison with the local authority where a personal advisor will be appointed and a full working relationship is maintained with the Blackburn Virtual School head teacher in respect of all pupils at the school who are subject of 'looked after' status or have a social worker. The Virtual School team can be contacted on <https://find.Blackburn.gov.uk/kb5/Blackburn/fsd/service.page?id=EV5tsPEBmk0> or by emailing-virtualschool@Blackburn.gov.uk
- Governing bodies of maintained schools and proprietors of academies must appoint a designated teacher and should work with local authorities to promote the educational achievements of registered pupils who are looked after, designated teachers have responsibility for promoting the educational achievements of children who have left care through adoption, special guardianship or child arrangement orders or who were adopted from state care outside of England and Wales. (Children and Social work Act 2017). The designated teacher will have appropriate training and the relevant qualifications, and experience

Children potentially at greater risk of harm

School recognise that while all pupils have a right to be safe and well, some groups of children are potentially at greater risk of harm and more vulnerable to abuse e.g those with a disability or special educational needs, those living with domestic abuse or drug/alcohol abusing parents.

Provisions within the Equality Act allows this school/college to take positive action, where it can be shown that it is proportionate, to deal with particular disadvantages affecting pupils or students with certain protected characteristics in order to meet their specific need.

Children who are lesbian, gay, bi, or trans (LGBTQ+)

The fact that a child or a young person may be LGBTQ+ is not in itself an inherent risk factor for harm. However, children who are LGBTQ+ can be targeted by other children. In this school, we, therefore, endeavour to reduce the additional barriers faced, and provide a safe space for them to speak out or share their concerns with members of staff or a trusted adult.

Children who need a social worker (child in need and child protection plans)

Children may need a social worker due to safeguarding or welfare needs, we recognise that children may need help due to absence, neglect, and complex family circumstances. This school will work in partnership with Blackburn Council where children have been allocated a social worker, the DSL will hold this information so that decisions can be made in the best interests of the child's safety, welfare, and educational outcomes. Where we have children on roll who need a social worker this will inform decisions about safeguarding (responding to unauthorised absence or missing education where there are known safeguarding risks) and about promoting welfare (we will consider the provision of pastoral support and/or academic support, alongside action by statutory services)

Children with Special educational needs, disabilities, or physical health issues

This school recognises that children with (SEN) and disabilities can face additional safeguarding challenges these can include

- Assumptions that indicators of possible abuse such as behaviour, mood, and injury related to the child's disability without further exploration
- These children being more prone to peer group isolation or bullying (including prejudice-based bullying) than other children
- The potential for SEND or certain medical conditions being disproportionately impacted by behaviours such as bullying, without outwardly showing any signs; and
- Communication barriers and difficulties in managing or reporting these challenges
- Mental health conditions may cause barriers for reporting concerns

The school has a duty to make reasonable adjustments for disabled children therefore to address these additional challenges, we will consider extra pastoral support for children with SEND and disabilities

9. Responding to Domestic Abuse

This school understands that the cross-government definition of domestic abuse and abuse is

- any incident or pattern of incidents of controlling, coercive, threatening behaviour, violence, or abuse between those aged 16 or over who are, or have been, intimate partners or family members regardless of gender or sexuality
- The abuse can encompass but is not limited to psychological, physical, sexual, financial, emotional harm
- Controlling behaviour is a range of acts designed to make a person subordinate and/or dependent by isolating them from sources of support, exploiting their resources and capacities for personal gain, depriving them of the means needed for independence, resistance, and escape, and regulating their everyday behaviour
- Coercive behaviour is an act or a pattern of acts of assault, threats, humiliation, and intimidation, or other abuse that is used to harm, punish, or frighten their victim if this school does identify children for whom domestic abuse may be a concern, they will apply the usual referral process and child protection procedures and pass this information to the designated safeguarding lead (DSL). The DSL can then refer cases relevant to Blackburn duty and advice team (DAAT). Where DV Notifications are received from DAAT, this information will be added to a pupil's chronology and child protection record to ensure that appropriate support can be provided where necessary
- This school is aware of and follow the [Blackburn Joint Agency protocol for domestic violence and abuse – \(Operation Encompass School notification\)](https://www.Blackburn.gov.uk/crime-and-public-safety/safer-Blackburn/domestic-abuse/) contact numbers for this must be kept updated by visiting-
<https://www.Blackburn.gov.uk/crime-and-public-safety/safer-Blackburn/domestic-abuse/>

10. Education safeguarding

Children who are absent from Education

- Our school recognises that children being absent from education for prolonged periods and/or on repeat occasions can act as a vital warning sign to a range of safeguarding issues including neglect, child sexual and child criminal exploitation-particularly county lines and thus ensures that information is shared between the headteacher and the attendance officer on a regular basis through an attendance meeting. Likewise, this school

understands that a parent failing to inform the school that a child has an authorised absence could be a cause for concern and thus, we will follow Blackburn Council's guidance 'First Day Calling' procedures

- Pupils who are absent, abscond or go missing during the school day are vulnerable and at potential risk of abuse or neglect. Our staff members will follow the Blackburn Council's guidance for schools where pupils absent themselves during the school day and school's or college's procedures for dealing with children who are absent/go missing, particularly on repeat occasions, to help identify the risk of abuse and neglect including sexual abuse or exploitation and to help prevent the risks of them going missing in future (**Appendix 9**)
- **If we have further concerns about your child's truancy, we will follow the West Yorkshire Police Truancy Policy**

All of the above documents can be viewed by clicking on the link below:

[School Safeguarding Officers | Blackburn Business Solutions](#)

- Our School appreciates that Blackburn Council has a statutory duty to ensure that all pupils of compulsory school age receive a suitable and appropriate education. **We will comply with our statutory duty to inform the local authority of any pupil who falls within the reporting notification requirements outlined in Children Missing Education – Statutory guidance for local authorities (DfE September 2016).** There are specific duties in respect of Children Missing Education (CME) and there are strict guidelines in respect of both the definition of CME and the legalities of deleting a pupil from a school roll. If you are subject to a court order in relation to your child's education, you may not remove your child from school without permission from the Magistrates' Court and your Supervising Officer or Responsible Officer .

Blackburn Children Missing Education (CME) team can be contacted via the email below:

<https://www.Blackburn.gov.uk/schools/school-attendance-and-educational-welfare-services/>

cme@Blackburn.gov.uk

Part Time Timetables

- Our School is aware that they must inform the Blackburn Education Safeguarding Service when using part time timetables for pupils and follow the part time timetable guidance

<https://eforms.Blackburn.gov.uk/part-time-timetable-notification/>

Suspensions and Exclusions

- When we are considering suspending, either fixed-term or permanently, a vulnerable pupil or a pupil who is either subject to a S47 Child Protection plan or there have previously been child protection concerns or the family is subject to a court order in relation to education, we will undertake an informed (multi-agency where other professionals are involved) assessment prior to making the decision to exclude. In the event of a one-off serious incident resulting in an immediate decision to permanently exclude, the assessment must be completed before convening a meeting of the Governing body.

School suspensions and permanent exclusions - GOV.UK (www.gov.uk)

Elective home Education (EHE)

- Elective home education is often referred to as 'education otherwise' in Section 7 of the Education Act 1996 which states: "It shall be the duty of the parent of every child of compulsory school age to cause her or him to receive efficient full-time education suitable to her/his age, aptitude and ability (and to any special educational needs she/he may have) either by attendance at school or otherwise". This means that parents/carers have a legal responsibility to ensure that their child is educated but this does not have to be in school. This school will follow the Department for Education (DFE) guidance should you as a parent decide to educate your children/child at home. If you are subject to a court order in relation to your child's education, you may not remove your child from school without permission from the Magistrates' Court and your Supervising Officer or Responsible Officer. Where a child has an Education, Health and Care plan the local authority will need to review the plan, working closely with parents and carers
- [*1.4.21 Elective Home Education \(proceduresonline.com\)*](#)
- <https://www.gov.uk/government/publications/elective-home-education>
- BehaviourAndInclusion@Blackburn.gov.uk

Child Employment

- Child Employment - Properly structured and regulated work can help develop and prepare young people for a full-time working life. A young person working part-time between the age of 13 and 16 years old, must request that the employer applies to Blackburn Council for a permit. There is no charge for a work permit. Employers have the ultimate responsibility to ensure that children of compulsory school age are registered with the Local Authority and have a work permit. Parents can also face prosecution if they allow their child to work illegally. Please note that it is against the law to employ children under the age of 13. As a school we will work in partnership with Blackburn council in relation to child employment by completing the Child Employment Referral Form as and when necessary.
- Supporting information and documents can be found by clicking on the link below;

<https://www.Blackburn.gov.uk/adult-and-childrens-services/child-employment-and-chaperoning/>

11. A Safer School Culture

Governors have agreed and ratified the following policies which must be read in conjunction with this policy and be provided to all staff as part of their induction procedures:

- Whistle Blowing/Confidential reporting policies (guidance to staff and volunteers on how they can raise concerns and receive appropriate feedback on action taken when staff have concerns about any adult's behaviour)
- School's procedures for managing children who are missing education
- Safeguarding and child protection policy (including online safety)
- School behaviour policy

- Staff code of conduct

Our school will comply with the [guidance for safer working practices for those working with children and young people in educational settings May 2019](#)

Safe working practice ensures that pupils are safe and that all staff:

- Are responsible for their actions and behaviour and should avoid any conduct which would lead any reasonable person to question their motivation and intentions
- Work in an open and transparent way
- Work with other colleagues where possible in situations open to question
- Discuss and/or take advice from school management over any incident which may give rise to concern
- Record any incidents or decisions made
- Apply the same professional standards regardless of gender, sexuality, or disability
- Comply and are aware of the confidentiality policy
- Are aware that breaches of the law and other professional guidelines could result in criminal or disciplinary action being taken against them

Risk Assessments

- Risk assessments are taken seriously and used to good effect to promote safety. Risk assessments are available for all aspects of the school's work, *such as premises and equipment, on-site activities, off-site activities, venues used, transport and trips*. Where relevant, risk assessments are carried out for individual pupils and supported by action plans identifying how potential risks would be managed.
- Individual risk assessments are also used when deciding a response to a child demonstrating potentially harmful behaviour such as sexually harmful behaviour or when identifying whether a child who may be particularly vulnerable, such as a child at risk of Exploitation

External Visitors

Contractors

Paragraph 272 says, 'Where schools and colleges use contractors to provide services, they should set out their safeguarding requirements in the contract between the organisation and the school or college.' Visiting Professionals Paragraph 284: 'For visitors who are there in a professional capacity check ID and be assured that the visitor has had the appropriate DBS check (or the visitor's employers have confirmed that their staff have appropriate checks). (self-employed professionals should show their DBS, as they have no employer to confirm that this has been done.) Paragraph 286 says, 'School and college safeguarding policies should set out the arrangements for individuals coming onto their premises, which may include an assessment of the education value, the age appropriateness of what is going to be delivered and whether relevant checks will be required.'

Invigilators

Any invigilators recruited to invigilate examinations at the school are subject to all the recruitment checks that staff

volunteers are subject to including a DBS check.

Safer Recruitment

- Section 175 of the Education Act 2002 requires the school to make arrangements to ensure that functions are carried out with a view to safeguarding and promoting the welfare of children
- Regulations made under Section 157 of that Act state that we must make arrangements to safeguard and promote the welfare of pupils
- The school will create a culture that safeguards and promotes the welfare of children in this school. As part of this culture, we **will** adopt robust recruitment procedures that deter and prevent people who are unsuitable to work with children from applying or securing employment or volunteering in this regulated establishment
- The safer recruitment of individuals to work in this school not only includes directly employed staff (or volunteers), also includes contractors, self-employed, agency, and third-party staff groups. We will set out our safeguarding and safer recruitment requirements in the contract clearly between the organisation(s) and school.
- Safer Recruitment is a vital factor in keeping children safe within the education environment. Our school when selecting our Safer Recruitment provider, will clarify the accreditation / re accreditation period. We will always ensure a re accreditation period for Safeguarding training
- We will also follow legislation governing those persons in ‘regulated activity’ (see below) or within ‘regulated establishments’ and the requirements to carry out criminal records and barred list checks

The main legislation in this respect is contained within the:

- Children’s Act 2008
- Safeguarding and Vulnerable Groups Act 2006
- Protection of Freedoms Act 2012 ([Protection of Freedoms Act 2012 \(legislation.gov.uk\)](https://www.legislation.gov.uk/ukpga/2012/15/contents))
- Equality Act 2010 (<https://www.legislation.gov.uk/ukpga/2010/15/contents>)
- Police Act 1997, the Police Act 1997 (Criminal Records) Regulations 2002, as amended, the Police Act 1997 (Criminal Records) No 2 Regulations 2009, as amended (<https://www.legislation.gov.uk/ukpga/1997/50/contents>)
- Rehabilitation of Offenders Act 1974 (Exceptions) Order 1975, as amended
- Sexual Offences Act 2003 (<https://www.legislation.gov.uk/ukpga/2003/42/contents>)
- Keeping Children Safe in Education 2024
- Working Together to Safeguard Children 2018
- Any subsequent amendments will also apply as relevant
- Requirements relating to the appointment, discipline, capability, suspension and dismissal of staff, use of supply staff/workers, checks and information to be held on the schools single central register (SCR), as well as information on teacher capability to be provided in references are specified within the School Staffing (England) Regulations 2009, as amended in 2012, 2013 and 2014

Section 128 Prohibitions

This updated version of KCSIE gives more clarification of 'management' roles that should be considered as ‘management’ in an independent school. Although some named roles were suggested in the past the DfE note that the individual’s job title is not the determining factor and other individuals could be considered to be ‘taking part in management’

Purpose of the schools Safer Recruitment Policy

- This school will take into account the legislation highlighted above, when we employ staff or engage volunteers, contractors, self-employed, agency and third-party staff groups to work with children adopt a consistent and rigorous approach in their recruitment and selection processes with the aim of ensuring that those recruited are suitable.

The purpose of safer recruitment is ultimately to:

- **Deter.** From the beginning of the recruitment process, – this school has a rigorous recruitment process and does not tolerate any form of abuse. Wording in adverts and recruitment information will aim to deter potential abusers
- **Identify and Reject.** It will not always be possible to deter potential abusers. Therefore, careful planning for the interview and selection stage, in terms of asking the right questions, setting appropriate tasks and obtaining the right information will assist in finding out who is suitable for the role and who is not
- **Prevent and Reject.** There are no guarantees that even the most robust safer recruitment process will prevent an inappropriate appointment. However, this does not mean it is too late to act. Ensuring that comprehensive induction processes are in place, together with appropriate policies and procedures, raising awareness through staff training and generally developing and maintaining a safe culture within the School will all help to prevent abuse or identify potential abusers
- The intention of our SR policy is to ensure that all stages of the recruitment process contain measures to deter, identify, prevent and reject unsuitable people from gaining access to pupils within the School.
- Our school policy and the practical implementation of recruitment and selection processes also aim to meet all legislative requirements, any statutory or other guidance that may from time to time be issued in order to keep children safe and safer recruitment in education, as well as principles of general good practice

Letters of Assurance

- An appropriate ‘letter of assurance’ will be on headed paper, personally addressed, dated, signed and provided by the relevant authorised person on behalf of the individual concerned, for example by the agency on behalf of an agency worker.
- The letter should include a statement of assurance that all of the checks we specified in our contract for services have been undertaken, the date on which they were completed, and that they are satisfactory

Table 1

<p>Blackburn Council recommend the following information is requested and confirmed in writing by the following parties;</p> <ul style="list-style-type: none"> • Agency worker (all staff groups); • Contractors; • Third Party Organisations (e.g. Blackburn Council/ NHS/ Locala/ KNH etc)
<ul style="list-style-type: none"> • Written confirmation all Pre employment checks (role dependent) have been satisfactorily carried out

<ul style="list-style-type: none"> • At least one recruiter on the recruitment panel to be Safer Recruitment trained (refreshed every 3 years)
<ul style="list-style-type: none"> • Applications forms with complete employment history
<ul style="list-style-type: none"> • 2 x verified references inc. question disciplinary, substantiated allegations towards children and capability
<ul style="list-style-type: none"> • DBS (+Barred list) where appropriate
<ul style="list-style-type: none"> • Prohibition from Teaching
<ul style="list-style-type: none"> • S128 checks (role dependent)
<ul style="list-style-type: none"> • Qualifications (role dependant)
<ul style="list-style-type: none"> • Right to Work in the UK
<ul style="list-style-type: none"> • Appropriate checks for overseas employees
<ul style="list-style-type: none"> • Disclosure under Childcare Disqualification Regulations 2018 and Childcare Act 2006
<ul style="list-style-type: none"> • References (Safer Recruitment)
<ul style="list-style-type: none"> • Medical clearance
<ul style="list-style-type: none"> • Any disclosed information/Risk assessments shared with School / Academy
<ul style="list-style-type: none"> • Safeguarding awareness training

Managing Allegations

Safeguarding concern or allegations made about a person who is in a position of trust (paid or unpaid) with children, in any setting.

All staff should follow the school whistle blowing policy if they have concerns in relation to a colleague

Local Authority Designated Officer (LADO) Safeguarding concerns or allegations that may meet the LADO harm threshold.

Blackburn LADO must be contacted within 1 working day, were you have or become aware of safeguarding concerns/allegations that might indicate a person may pose a risk of harm if they continue to work in their present position, or in any capacity with children in any setting.

The LADO risk of harm threshold is set out with Working Together to Safeguard Children and Keeping Children Safe in Education mandatory guidance. This risk of harm threshold is as follows.

- behaved in a way that has harmed a child, or may have harmed a child and/or
- possibly committed a criminal offence against or related to a child, and/or

- behaved towards a child or children in a way that indicates he or she may pose a risk of harm to children, and/or
- behaved or may have behaved in a way that indicates they may not be suitable to work with children.

The last bullet point above includes behaviour that may have happened outside an organisation that might make an individual unsuitable to work with children, this is known as transferable risk.

An allegation can relate to an adult's behaviour outside work, and their relationships with others, if they:

- Have behaved in a way in their personal life that raises safeguarding concerns. These concerns do not have to directly relate to a child but could, for example, include an arrest for the possession of a weapon;
- Have, as a parent or carer, become subject to child protection procedures;
- Are closely associated with someone in their personal lives (e.g. partner, member of the family or other household member) who may present a risk of harm to child/ren for whom the adult is responsible in their employment/volunteering.
- Any concerns should be considered within the context of the four categories of abuse (i.e. physical, sexual and emotional abuse and neglect), and include concerns relating to the possession of indecent images / pseudo images of children or inappropriate relationships between members of staff and children or young people.

LADO guidance has two sections covering the two levels of safeguarding concerns and allegations:

- Safeguarding concerns / allegations that may meet the above harm threshold.
- Safeguarding concerns / allegations that do not meet the harm threshold – referred to for the purposes of LADO guidance as 'low-level concerns'. (See Low Levels concern Policy)

Blackburn LADO Guidance and how to contact Blackburn LADO can be found by clicking the link below.

Training, knowledge and skills

- All staff members should be aware of systems within our school that support safeguarding, and these will be explained to them as part of our staff induction. This includes: the schools or college's safeguarding child protection policy; the school's safer working practice document and the school's whistleblowing procedures
- Designated safeguarding leads should have a good understanding of their own role, how to identify, understand and respond to specific needs that can increase the vulnerability of children, as well as specific harms that can put children at risk, and the processes, procedures and responsibilities of other agencies, particularly children's social care

Designated safeguarding leads must attend:

1. Roles & Responsibilities of the designated safeguarding lead (DSL)
 2. Multi-agency Working Together to Safeguard Children and Young People
 3. A Positive contribution to case conferences and core groups
- They will attend DSL refresher training every two years. The DSL will undertake Prevent Awareness Training (e.g. Workshop to Raise Awareness of Prevent [WRAP]) to enable them to provide advice and support to other members of staff on protecting pupils from the risk of radicalisation
 - The school will ensure all staff including temporary and volunteers receive induction and training appropriate to their roles and responsibilities, especially staff new to the school. All staff will complete basic awareness

refresher training at least every three years (including online safety which, amongst other things includes an understanding of the expectations, applicable roles and responsibilities in relation to filtering and monitoring) and regular safeguarding and child protection updates via email, e-bulletins, and staff meetings as required, but at least annually to provide them with relevant skills and knowledge to safeguard children effectively. Access to training can be via the Education Safeguarding Service and the Blackburn Safeguarding Children Partnership

- The head teacher will attend appropriate safeguarding training at least every three years
- Governors, including the nominated Governor will attend specific training for their role, updated at least every three years

Providing support to staff

Designated safeguarding leads should:

- Ensure that staff are supported during the referral process
- Support staff to consider how safeguarding, welfare and educational outcomes are linked, including to inform the provision of academic and pastoral support
- Encourage a culture of listening to children and taking account of their wishes and feelings, among all staff, and in any measures the school may put in place to protect them
- Understand the difficulties that children may have in approaching staff about their circumstances and consider how to build trusted relationships which facilitate communication
- Training and support can be accessed through Blackburn Schools Safeguarding Officers by visiting- <https://Blackburn.scp.org.uk/training-2/>
- Any training accessed through third party/independent providers must reflect the Blackburn Safeguarding Children Partnership protocols this training should be recorded by the school. It is the responsibility of the head teacher to quality assure any training that is delivered to staff in this school

12. Child Protection Records

Child protection and safeguarding records will be held securely, with access being restricted to the designated safeguarding lead and their deputies, head teacher and in cases of Early Support, the nominated lead professional, if this is not a designated safeguarding lead/officer. For further information please see [Early Support Assessments](https://www.Blackburn scp.org.uk/professionals/early-help/) <https://www.Blackburn scp.org.uk/professionals/early-help/>) The following information must be kept securely with restricted access, whether paper or electronic:

- Chronology (summary of significant events and the actions and involvement of the school/college) (Appendix 3)
- All completed child protection cause for concern records (Appendix 4)
- Any child protection information received from the child's previous educational establishment
- Records of discussions, telephone calls and meetings with colleagues and other agencies or services
- Professional consultations
- Letters and emails sent and received relating to child protection matters
- Referral forms sent to Duty and Advice, other external agencies or education-based services
- Minutes or notes of meetings, e.g. child protection conferences, core group meetings, etc., copied to the file of each child in the family, as appropriate
- Formal plans for, or linked to, the child e.g. Child Protection Plans, Early Support risk assessments etc
- A copy of any support plan for the pupil concerned (Appendix 5)
- When a pupil leaves this school, we will ensure that the child protection file is transferred securely and separately from the main pupil file to the receiving school/educational establishment (where this is known) as soon as possible, and within 5 days for an in -year transfer or within the first 5 days of the start of a new term
- When there is an existing risk management plan/assessment in place for behaviours that are deemed potentially harmful to the pupil or others (i.e. self-harming or harmful sexualised behaviour), this information will be shared with the destination provision prior to the pupil starting so that appropriate care and control measures can be put in place to mitigate the potential of any risk of further harm occurring. The designated safeguarding lead will consider if it would be appropriate to share any information with the new school or college in advance of a child leaving, for example prior to a transfer programme. **When a child leaves school before statutory school leaving age, the child protection file will be transferred to the new school or college.** There is no need for this school to keep written or electronic copies of the child protection records, therefore these will be deleted from electronic systems once the successful transfer has been confirmed. The exception to this rule will be in any of the following instances:
 - When a vulnerable young person is moving to a further education (FE) establishment, consideration will be given to the pupil's wishes and feelings about their child protection information being passed on, in order that the FE establishment can provide appropriate support. In cases when it is deemed appropriate, relevant child protection information will be shared via the FE Safeguarding Information Sharing Form (Appendix 10). The

original records will be retained and archived by this school/college. Due consideration will be given to the sharing of any additional information requested by the receiving establishment

- When the destination school is not known (*the original records should be retained by the school*)
- When the child has not attended the nominated school (*the original records should be retained by the school*)
- There is any on-going legal action (*the original file should be retained by the school and a copy sent*)
- Pupil records will be transferred in a secure manner, for example, through secure electronic file transfer or by hand. When hand-delivering pupil records, a list of the names of those pupils whose records are being transferred and the name of the school/college they are being transferred to will be made and a signature obtained from the receiving school/college as proof of receipt. When sending records through secure electronic file transfer, a delivery and read receipt of the transfer will be retained for audit purposes
- If a pupil moves from our school, child protection records will be forwarded onto the named designated safeguarding lead at the new school, with due regard to their confidential nature. Good practice suggests that this should always be done with a face to face handover between designated staff or a verbal conversation is had over the telephone if a face to face handover is not possible. A signed receipt of file transfer or an electronic delivery and read receipt must be obtained for audit purposes by the delivering school
- When sending by post, pupil's records will be sent "Special Delivery". A **note** of the special delivery number should also be made to enable the records to be tracked and traced via Royal Mail
- For audit purposes a note of all pupil records transferred or received will be kept in either paper or electronic format. This will include the child's name, date of birth, where and to whom the records have been sent, and the date sent and/or received. A copy of the child protection chronology will also be retained for audit purposes and kept securely
- If a pupil is permanently excluded and moves to an alternative or specialist provision, child protection records will be forwarded onto the relevant organisation in accordance with the 'The Education (Pupil Information – England) Regulations 2005, following the above procedure for delivery of the records
- When a designated safeguarding lead member of staff resigns their post or no longer has child protection responsibility, there will be a full face to face handover/exchange of information with the new post holder
- In exceptional circumstances when a face to face handover is unfeasible, it is the responsibility of the head teacher to ensure that the new post holder is fully conversant with all procedures and case files
- All designated safeguarding leads receiving current (live) files or closed files will keep all contents enclosed and not remove any material
- All receipts confirming file transfer will be kept in accordance with the recommended school retention periods. For further information refer to the archiving section

Archiving

The school that the pupil attended until statutory school leaving age (or the school where the pupil completed sixth form studies) is responsible for retaining any child protection records they may hold. Child protection records should be retained until the child's 26th birthday, after which point the file will be destroyed confidentially. The decision of how and where to store child protection files must be made by our school via our governing body. Due to the sensitivity of the information, the records should continue to be held in a secure area with limited access e.g. designated officer or head teacher. The DSL is responsible for ensuring that all child protection files are archived in accordance with the timescales referenced above. The designated safeguarding lead is responsible for ensuring that the appropriate timeframes for archiving and destroying child protection records referenced above are set on electronic systems accordingly for each pupil

Child and parent access to child protection files

Under Data Protection legislation (General Data Protection Regulation & Data Protection Act 2018) a pupil or their nominated representative have several legal rights in respect of information relating to them. These rights include the right to access and the right to rectification of inaccurate data. Therefore, it is important to remember that all information should be accurately recorded, objective in nature and expressed in a professional manner

Any pupil who has a child protection file has a right to request access to it. However, neither the pupil nor the parent has an automatic right to see all the information held in child protection records Information can be withheld if disclosure:

- Could cause serious harm or is likely to cause serious harm to the physical or mental health or condition of the child or another person
- Could reveal that the child or another person has been a subject of or may be at risk of child abuse, and the disclosure is not in the best interests of the child
- Is likely to prejudice an on-going criminal investigation
- Information about the child also relates to another person who could be identified from it or the information has been given by another person who could be identified as the source, unless the person has consented to the disclosure or the person providing the information is an employee of the establishment or the Local Authority
- It is best practice to make reports available to the child or their parents unless the exceptions described above apply. If an application is made to see the whole record, advice can be sought from the Local Authority
- The establishment's report to the child protection conference should be shared with the child, if old enough, and parent at least two days before the conference

Safe destruction of the pupil record

Where records have been identified for destruction, they will be disposed of securely at the end of the academic year (or

as soon as practical before that time). Records that have been identified for destruction should be confidentially destroyed. This is because they will either contain personal or sensitive information, which is subject to the requirements of Data Protection legislation or they will contain information that is confidential to our school or the Local Authority. Information should be shredded (or deleted as appropriate) prior to disposal or confidential disposal can be arranged through private contractors. For audit purposes the school should maintain a list of records which have been destroyed and who authorised their destruction. This can be kept securely in either paper or an electronic format

Appendix 1 Definitions and indicators of abuse

Reference: Working Together to Safeguard Children (DfE 2018). See also Keeping Children Safe in Education Part one and Annex B

(https://assets.publishing.service.gov.uk/government/uploads/system/uploads/attachment_data/file/1080047/KCSI_E_2024_revised.pdf)

Abuse: a form of maltreatment of a child. Somebody may abuse or neglect a child by inflicting harm or by failing to act to prevent harm. Harm can include ill-treatment that is not physical as well as the impact of witnessing ill-treatment of others. This can be particularly relevant, for example, in relation to the impact on children of all forms of domestic abuse. Children may be abused in a family or in an institutional or community setting by those known to them or, more rarely, by others. Abuse can take place wholly online, or technology may be used to facilitate offline abuse. Children may be abused by an adult or adults or by another child or children.

Neglect: Neglect is the persistent failure to meet a child's basic physical and/or psychological needs, likely to result in the serious impairment of the child's health or development. Neglect may occur during pregnancy as a result maternal substance abuse. Blackburn safeguarding children's partnership (KSCP) have developed in collaboration with a wide range of partners a toolkit with the aim of supporting anyone working with children, young people, parents and families to identify, assess and reduce child neglect [Neglect - https://www.Blackburn.scp.org.uk/professionals/neglect/](https://www.Blackburn.scp.org.uk/professionals/neglect/)

Once a child is born, neglect may involve a parent or carer failing to:

- Provide adequate food, clothing and shelter (including exclusion from home or abandonment)
- Protect a child from physical and emotional harm or danger
- Ensure adequate supervision (including the use of inadequate caregivers)
- Ensure access to appropriate medical care or treatment

It may also include neglect of, or unresponsiveness to, a child's basic emotional needs.

Examples which may indicate neglect (not designed to be used as a checklist)

- Hunger
- Tiredness or listlessness
- Child dirty or unkempt
- Poorly or inappropriately clad for the weather
- Poor school attendance or often late for school
- Poor concentration
- Affection or attention-seeking behaviour
- Untreated illnesses/injuries

- Pallid complexion
- Stealing or scavenging compulsively
- Failure to achieve developmental milestones, for example, growth, weight
- Failure to develop intellectually or socially
- Neurotic behaviour

Physical abuse: Physical abuse may involve hitting, shaking, throwing, poisoning, burning or scalding, drowning, suffocating or otherwise causing physical harm to a child. Physical harm may also be caused when a parent or carer fabricates the symptoms of, or deliberately induces, illness in a child

Examples which may indicate physical abuse (not designed to be used as a checklist):

- Patterns of bruising; inconsistent account of how bruising or injuries occurred
- Finger, hand, or nail marks, black eyes
- Bite marks
- Round burn marks, burns, and scalds
- Lacerations
- Fractures
- Bald patches
- Symptoms of drug or alcohol intoxication or poisoning
- Unaccountable covering of limbs, even in hot weather
- Fear of going home or parents being contacted
- Fear of medical help
- Fear of changing for sports activities
- Inexplicable fear of adults or over-compliance
- Violence or aggression towards others including bullying
- Isolation from peers

Sexual abuse: Involves forcing or enticing a child or young person to take part in sexual activities, not necessarily involving a high level of violence, whether or not the child is aware of what is happening. The activities may involve physical contact, including assault by penetration (for example rape or oral sex) or non-penetrative acts such as masturbation, kissing, rubbing and touching outside of clothing. They may also include non-contact activities, such as involving children in looking at, or in the production of, sexual images, watching sexual activities, encouraging children to behave in sexually inappropriate ways, or grooming a child in preparation for abuse. Sexual abuse can take place online, and technology can be used to facilitate offline abuse. Sexual abuse is not solely perpetrated by adult males. Women can also commit acts of sexual abuse, as can other children

Examples which may indicate sexual abuse (not designed to be used as a checklist):

- Sexually explicit play or behaviour or age-inappropriate knowledge
- Anal or vaginal discharge, soreness or scratching
- Reluctance to go home
- Inability to concentrate, tiredness
- Refusal to communicate
- Thrush, Persistent complaints of stomach disorders or pains
- Eating disorders, for example Anorexia Nervosa and Bulimia
- Attention seeking behaviour, self-mutilation, substance abuse
- Aggressive behaviour including sexual harassment or molestation
- Unusually compliant
- Regressive behaviour, enuresis, soiling
- Frequent or open masturbation, touching others inappropriately
- Depression, withdrawal, isolation from peer group
- Reluctance to undress for sports activities or swimming
- Bruises, scratches in genital area

Emotional abuse: Emotional abuse is the persistent emotional maltreatment of a child such as to cause severe and persistent adverse effects on the child's emotional development. It may involve conveying to children that they are worthless or unloved, inadequate, or valued only as far as they meet the needs of another person. It may include not giving the child opportunities to express their views, deliberately silencing them or 'making fun' of what they say or how they communicate. It may feature age or developmentally inappropriate expectations being imposed on children. These may include interactions that are beyond the child's developmental capability, as well as overprotection and limitation of exploration and learning, or preventing the child in participating in normal social interaction. It may also involve seeing or hearing the ill-treatment of another. It may involve serious bullying (including cyber bullying), causing children frequently to feel frightened or in danger, or the exploitation or corruption of children. Some level of emotional abuse is involved in all types of maltreatment

Examples which may indicate emotional abuse (not designed to be used as a checklist):

- Over-reaction to mistakes, continual self-deprecation
- Delayed physical, mental, emotional development
- Sudden speech or sensory disorders
- Inappropriate emotional responses, fantasies
- Neurotic behaviour: rocking, banging head, regression, tics and twitches
- Self-harming, drug or solvent abuse
- Fear of parents being contacted
- Running away / going missing
- Compulsive stealing
- Masturbation, appetite disorders - anorexia nervosa, bulimia
- Soiling, smearing faeces, enuresis

N.B: Some situations where children stop communication suddenly (known as “traumatic mutism”) may indicate maltreatment

Research and experience indicate that the following responses from parents may suggest a cause for concern:

- An unexpected delay in seeking treatment that is obviously needed
- An unawareness or denial of any injury, pain or loss of function (for example, a fractured limb)
- Incompatible explanations offered, several different explanations or the child is said to have acted in a way that is inappropriate to her/his age and development
- Reluctance to give information or failure to mention other known relevant injuries
- Frequent presentation of minor injuries
- Unrealistic expectations or constant complaints about the child
- Alcohol misuse or other drug/substance misuse
- Parents request removal of the child from home
- Violence between adults in the household

Children with Special Educational Needs and Disabilities

When working with children with disabilities school staff will to be aware that additional possible indicators of abuse and/or neglect may also include:

- A bruise in a site that might not be of concern on an ambulant child such as the shin, might be of concern on a non-mobile child
- Not getting enough help with feeding leading to malnourishment
- Poor toileting arrangements
- Lack of stimulation
- Unjustified and/or excessive use of restraint
- Rough handling, extreme behaviour modification e.g. deprivation of liquid medication, food or clothing, disabling wheelchair batteries
- Unwillingness to try to learn a child's means of communication
- Ill-fitting equipment e.g. callipers, sleep boards, inappropriate splinting.
- Misappropriation of a child's finances

- Invasive procedures

Appendix 2 Dealing with a disclosure of abuse

When a child tells me about abuse s/he has suffered, what must I remember?

- Stay calm
- Do not transmit shock, anger or embarrassment
- Reassure the child. Tell her/him you are pleased that s/he is speaking to you
- Never enter a pact of secrecy with the child. Assure her/him that you will try to help but let the child know that you will have to tell other people in order to do this state who this will be and why
- Tell her/him that you believe them. Children very rarely lie about abuse; but s/he may have tried to tell others and not been heard or believed
- Tell the child that it is not her/his fault
- Encourage the child to talk but do not ask "leading questions" or press for information
- Listen and remember
- Check that you have understood correctly what the child is trying to tell you
- Praise the child for telling you. Communicate that s/he has a right to be safe and protected
- Do not tell the child that what s/he experienced is dirty, naughty or bad
- It is inappropriate to make any comments about the alleged offender
- Be aware that the child may retract what s/he has told you. It is essential to record all you have heard
- At the end of the conversation, tell the child again who you are going to tell and why that person or those people need to know
- As soon as you can afterwards, make a detailed record of the conversation using the child's own language. Include any questions you may have asked. Do not add any opinions or interpretations

NB It is not school staff's role to seek disclosures. Their role is to observe that something may be wrong, ask about it, listen, be available and try to make time to talk

Immediately afterwards

All disclosures of abuse will be responded to in keeping with the professional roles and responsibilities outlined in Fig 1 summary of school procedure to follow where there are concerns about a child

Cause for Concern/Disclosure Form

Page 1 of 2

Strictly Confidential

Please do not interpret what is seen or heard; simply record the facts. After completing the form, pass it immediately to the DSL

Name of child..... Class / Tutor group.....

Name of staff member completing form.....

Day..... Date..... Time..... Place..... ...(Of observed behaviour / discussion / disclosure)

Signed: _____

Nature of incident / concern including relevant background (Record child's word verbatim and any wishes and feelings expressed)

Action/passed to: _____

For: Designated Safeguarding Lead Officer Use

Name: _____ Date: _____ Time _____

Action Taken	By whom	Outcome
<p>Discuss with child</p> <p>Ensure the child's wishes and feelings are ascertained where appropriate and fully recorded.</p>		
<p>Monitoring sheet</p>		
<p>Check behaviour database, for recent incidents, that might be significant to inform assessment</p>		
<p>Contact parents</p> <p>Please tick</p>		

Telephone Call ____ Meeting: ____ Email: ____		
Refer as appropriate (i.e. D&A, Early Support etc.)		
Other (Please specify)		

Appendix 5
Specific, Measurable, Attainable, Realistic, Timely (SMART) Plan

Example: Overview of Pupil Support/SMART Plan

Child Protection Pupil Support Plan Information	Name of Pupil:		
Current Care/living arrangements			
Support needs identified			
	Support/Intervention		
Type of support/intervention	Provider	Start Date	End Date
	Agencies Involved		
Name of professional	Agency	Email	Telephone

Appendix 6
Child Exploitation Partnership Assessment and Decision-Making Tool

What is this tool? - The tool is to help you assess whether a child may be at risk of sexual or criminal exploitation (CSE/CCE)

Who should you use this tool with? - The tool can be used by any professional working with a child up to their 18th birthday

When to use the tool - This tool is to help you make an initial assessment relating to a child's vulnerability to, and/or risk of exploitation, and what actions are required; it is not intended to be a referral form. When you have completed the tool, please refer to the section '**What Next**' to inform a conversation with your manager/safeguarding lead regarding how to proceed. If on completion you contact the Children's Social Care (CSC) Duty and Advice Team, an electronic copy of the completed tool will be required to inform discussion

Using the tool - In order to identify children at risk of, vulnerable to, or experiencing sexual and/or criminal exploitation, please consider **all** of the risk and vulnerability indicators and indicate your level of concern as **No, Low, Medium or High**. The table of indicators below is only a guide to inform your assessment it is not exhaustive, and you may have other concerns; please highlight these in the other information box. Additionally, the factors against each indicator are also not exhaustive and are simply prompts for consideration. Highlighting one high risk concern, or several low, may indicate a serious risk of harm/child exploitation, alternatively this might be an indication of other concerns which require addressing

You should be aware that:

- Where there are concerns which relate to sexual exploitation and the **child is aged under 13**, a child contact must be made with the Children's Social Care Duty and Advice team
- Where there are concerns of criminal or sexual exploitation and the child has **send** a child contact must be made with the Children's Social Care Duty and Advice team
- It is important that you provide narrative at the end of the table to support and evidence your concerns
- It is important that you provide information relating to others who may pose a risk of harm to the child/young person
- When completing this tool, it is essential to highlight if concerns raised and/or the information provided are **current or historic**. If either are historic but relevant, it is necessary to reference how they relate to the current assessment of risk and vulnerability
- When completing the tool, it is crucial that the child or young person's use of **social media** is considered throughout

Child, Parent and Professional details

Child's name		DOB		Age	
Address		Contact number		Gender	
Postcode		Religion		Ethnicity	
Child participated in the assessment	Yes		Comments		
	No				
Name of Primary Carer		Contact number			
Address and postcode <small>(If different from the child's)</small>		Relationship to child			
Carer contributed to the assessment	Yes		Comments		
	No				

Person completing the assessment		Agency/team	
Contact details		Signed	
Consent to share with CSC provided *(where applicable)	Yes		Comments
	No		

Assessment of Risk and Vulnerability

1) Friends and Family				2) Accommodation			
<p>v Reduced contact with family /friends which is of concern v New friends who are not known to parents/carers v Unexplained change in attitude from the child v Relationship (s) breakdown v Suspected abuse in family (emotional, neglect, physical or sexual) v A lack of warmth/understanding/attachment and/or trust from parent/carer v Carers do not implement age appropriate boundaries (including use around social media) v Failure to report missing episodes v Abusive/bullying friendships v Friends/family are involved in gang activity/known to the criminal justice system/Neighbourhood Police/ASB teams</p>				<p>v Child or young person and or their family reside in unsuitable/unstable/temporary/overcrowded accommodation v Concerns about location (neighbourhood, ASB, gang activity) v Concerns about isolation/safety v Is unhappy with accommodation (although it meet physical need) v Often stays elsewhere v Is homeless and or sofa surfing v Resides independently in unsupported accommodation v Accommodation is being accessed/used by adults/peers of concern or who pose a risk to the young</p>			
No	Low	Medium	High	No	Low	Medium	High
3) Education, Training, Employment (ETE)				4) Emotional Wellbeing			
<p>v Is not engaged in ETE, and/or is not motivated to be v Excluded and/or does not have an education offer v Whereabouts often unknown v Frequently late/leaves early/leaves site, incidents of absence without permission v Change in attitude to learning/employment v Regular breakdown of school/training placements due to perceived behavioural issues v Increasingly disruptive, hostile or physically aggressive v Friendships/peer groups either within or outside the ETE setting are with others at risk of criminal and/or sexual exploitation v Is socially isolated in the ETE setting, and /or experiences bullying, abuse/violence/harassment</p>				<p>v Fatigue v Poor self-image v Low mood v Self-harm - Cutting v Overdosing v Eating disorder v Suicide attempts v Concerning perceived 'risk taking' (substance misuse, sexual risking taking, offending) v Low self-esteem/self-confidence v Bullying/threatening behaviour v Aggression/violent outbursts v Concerning substance misuse v Expressions around invincibility or not caring about what happens to them v Fear and scare of reprisal or violence from young people or adults</p>			
No	Low	Medium	High	No	Low	Medium	High

5) Experience of Abuse and Violence				6) Missing From Home or Care			
<p>v Known (previous or current) violence and/or abuse from within the family, and/or from peers, associates, intimate partners v Physical injuries v Disclosure/evidence of physical/sexual assault v Evidence of coercion/control v Living in a gang associated neighbourhood v Use of sexualised language and/or violence v Risk taking behaviours (sexual and /or offending) v Low self-esteem/self-confidence/self-harm v Bullying/threatening behaviour, aggression, violent outbursts v Limited or no recognition of abusive/exploitative behaviour or understanding of abusive/exploitative behaviour but unable to apply this to their own situation</p>				<p>Stays out late or overnight without permission/explanation v Whereabouts unknown and child/young person secretive about where and who they spend time with v Repeated episodes of running away/going missing/away from home/accommodation (Including short periods) v Reported missing with other children/young people assessed to be at risk from criminal/sexual exploitation v Known to spend time when away/missing with peers/adults assessed to be of concern v Returns looking well cared for/not hungry/with new belongings v Found/known to have been outside of their local of area and/or in locations of concern v No known means self-support/travel whilst missing/away When missing/found, known to be with others involved with group/gang activity/offending behaviour/at risk of exploitation</p>			
No	Low	Medium	High	No	Low	Medium	High
7) Associations and Locations				8) Substance Misuse			
<p>v Extensive use of phone/secret use/calls and contact with unknown others v Has use of more than one mobile phone v Spends time at addresses and places not know to parent/carer vGoes or is taken to places they or their family have no connections with</p> <p>v Evidence of associations/relationships with others believed/known to be involved in sexual grooming/exploitation v Friendships/associations with others at risk of criminal or sexual exploitation v Gang association through relatives/peers/neighbourhood/intimate relationships v Information suggests that they are at risk of/involved in County Lines (grooming/exploitation, drug dealing, moving money/goods and/or organised crime) v Use of social media/mobile phone to share sexualised images v Has arranged to meet up with unknown others via social media contact v Use of social media/mobile phones for sharing gang related material/activities</p>				<p>v Evidence of regular/heavy or dependant substance (including alcohol) use v Professional/parent/carer concern relating to use v Concern regarding how substance misuse is being accessed/funded/supplied</p> <p>v Is believed to owe money be in debited to others related to substance misuse v Has previously been cautioned/arrested/charged for, possession of drugs, dealing drugs</p>			

No	Low	Medium	High	No	Low	Medium	High

9) Coercion and Control				10) Rewards			
<p>v Limited/reduced/no significant contact with family/friends, significant adults and/or services v Appears to be 'controlled'/negatively influenced by others v Concerns about significant relationships and domestic abuse/violence/control v Is known to be associating with adults and/or peers of concern and does want to alter this v Abduction/forced imprisonment v Gang association/involvement v Sharing of intimate pictures/information online when asked to by an adult/peer/unknown person v Secrecy regarding relationships v Presents as being scared/controlled v Picked up/dropped off from appointments by person's unknown v Phone calls they have to respond to and/or leads to them be 'needing' to be elsewhere v Professional concern relating to Modern day slavery/child trafficking</p>				<p>v Concern about unaccounted for monies and/or goods, (new clothes, jewellery mobile phone, mobile phone top-ups etc) v Concern regarding the funding of misuse of drugs/alcohol/use of tobacco, cigarettes, entry into clubs, trips away from home, through unknown sources v Has use of more than one mobile phone v Secrecy about ability to 'get around'/'be places' without known mode of transport /funds v Concerns about how the child/young person funds other items (fast food, taxi fares, etc.)</p>			
No	Low	Medium	High	No	Low	Medium	High
11) Sexual Relationships				12) Risk to Others			
<p>v Young person is sexually active but not practising safe sex/is not accessing/willing to access, sexual health services v Disclosure from young person regarding feeling pressured to have sex or to perform sexual acts in 'exchange' for status/protection, possessions, substances or affection v Evidence of having (previously or currently) a sexually transmitted disease v Concerns about untreated STi's v Miscarriage(s)/termination(s)/Pregnancy v Physical symptoms suggestive of sexual assault v Is in a sexual relationship with an adult/or there is a wide age gap v Is under 13 and sexually active v Concerns about ability to understand due to intoxication/substance misuse</p>				<p>v Displays violence/bullying and threatening behaviour and/or angry outbursts v Encourages or coerces others to engage in 'risky' activities and/or situations v Introduces others to 'risky' people/places, via friendships, associations, venues v Bullying v Sexualised bullying, including via the internet/social media sites v Offending behaviour v Gang association through relatives, peers or intimate relationships v Has been cautioned/arrested/charged for weapon offence(s)/gang activity/related violence v Sells/distributes/shares drugs v Displays harmful sexual behaviours</p>			
No	Low	Medium	High	No	Low	Medium	High

13) Engagement with Services				14) Wider Child and Family Factors			
<p>v Reduced level of engagement or no meaningful engagement v Secretive about friendships/associations/behaviours v Sporadic contact, and/or missed appointments with limited explanation</p> <p>v Professional concern re ability to engage with child/young person v Often otherwise distracted when attends/engages v Presents as nervous and/or keen to be elsewhere</p>				<p>Family factors – v Known abuse/neglect in the family. v Parental/family substance misuse v Parental mental health v Partner domestic abuse violence/coercion and control v Child to parent abuse v Adult sex work v Deprivation v Social isolation v Parental experiences of exploitation</p> <p>Child factors - v Learning disabilities/difficulties, (including not diagnosed) v Financially unsupported</p> <p>v Unaccompanied migrant/refugee/asylum seeker</p> <p>v Recent bereavement or loss v Unsure about sexual orientation or unable to disclose sexual orientation</p> <p>v Young carer v Unmet need (social, emotional, physical)</p>			
No	Low	Medium	High	No	Low	Medium	High

Additional Information

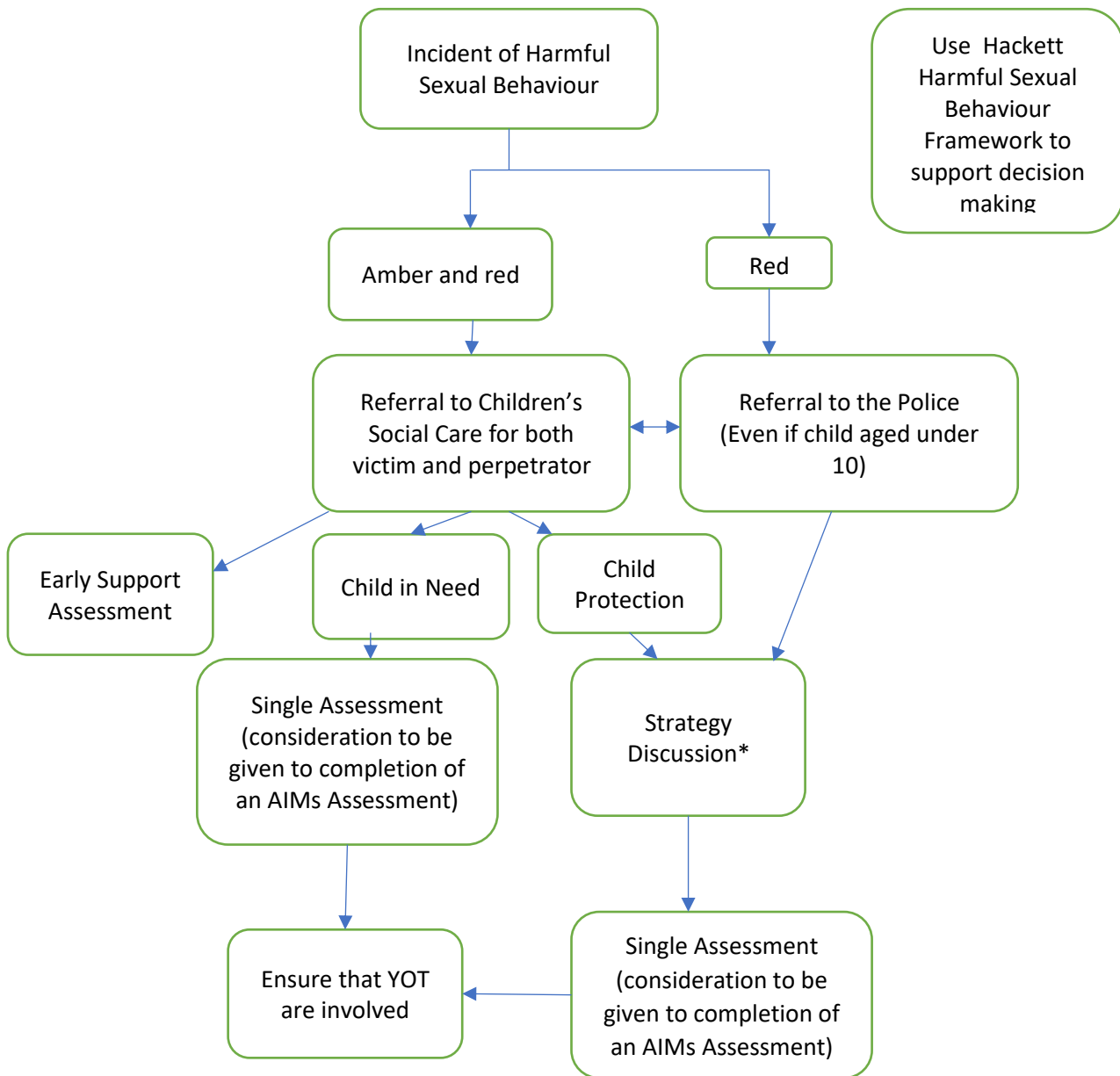
<ul style="list-style-type: none"> Identified Protective Factors
<ul style="list-style-type: none"> Other Relevant Information (such as places and people of concern)

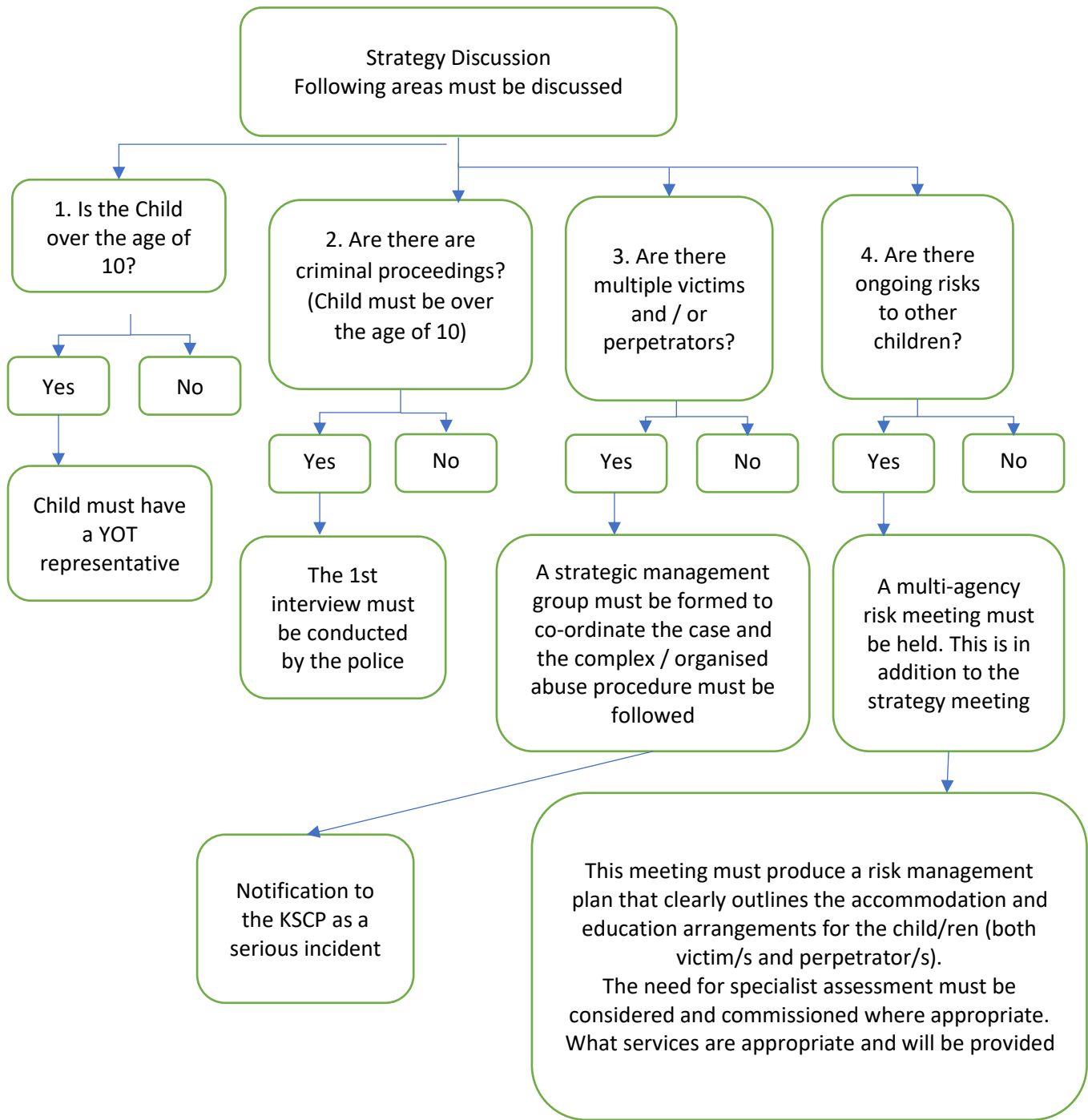
Views of the child or young person			
Views of parent / carer			
Overall level of assessed Risk and Vulnerability (Please provide details of relevant information to support your indicated levels of concern)			
No	Low	Medium	High
Whilst there may be concerns for the welfare of the child which may require service provision, there are no current concerns relating to exploitation	The information and assessment raise some concerns relating to the child's risk and vulnerability, but there are positive protective factors in the child/young person's life	Overall, the information and assessment indicate that the child is vulnerable to/at risk from exploitation. However, there are no immediate or urgent safeguarding concerns	The overall assessment indicates that the child is highly vulnerable to, at risk from exploitation or that they are currently experiencing exploitation. (They may not recognise this)
<input data-bbox="177 1570 360 1641" type="checkbox"/>	<input data-bbox="533 1570 716 1641" type="checkbox"/>	<input data-bbox="895 1570 1078 1641" type="checkbox"/>	<input data-bbox="1243 1570 1426 1641" type="checkbox"/>

What Next

- Where the assessed level of risk and vulnerability is **Medium or high**, contact Children's Services Duty & Advice team to discuss and agree next steps
- Keep a copy of this tool in your agency records and use it to inform any identified vulnerability, risk or need, and for planning intervention/support the child and their family may require
- Where the overall assessed level of concern is **Low** and the child does not have an allocated social worker, review your assessment on a regular basis, (at a minimum on a quarterly basis) and if there is an increased level of concern, complete a new tool. Where this leads to an overall assessment of **Medium or High**; contact Children's Social Care Duty and Advice Team to discuss your increased concern
- Where the child/young person already has an allocated social worker, you must contact them to share this tool
- If sharing a completed tool with Children's Social Care, an electronic version of this tool will be required

Appendix 7: Harmful Sexual Behaviour Response Checklist





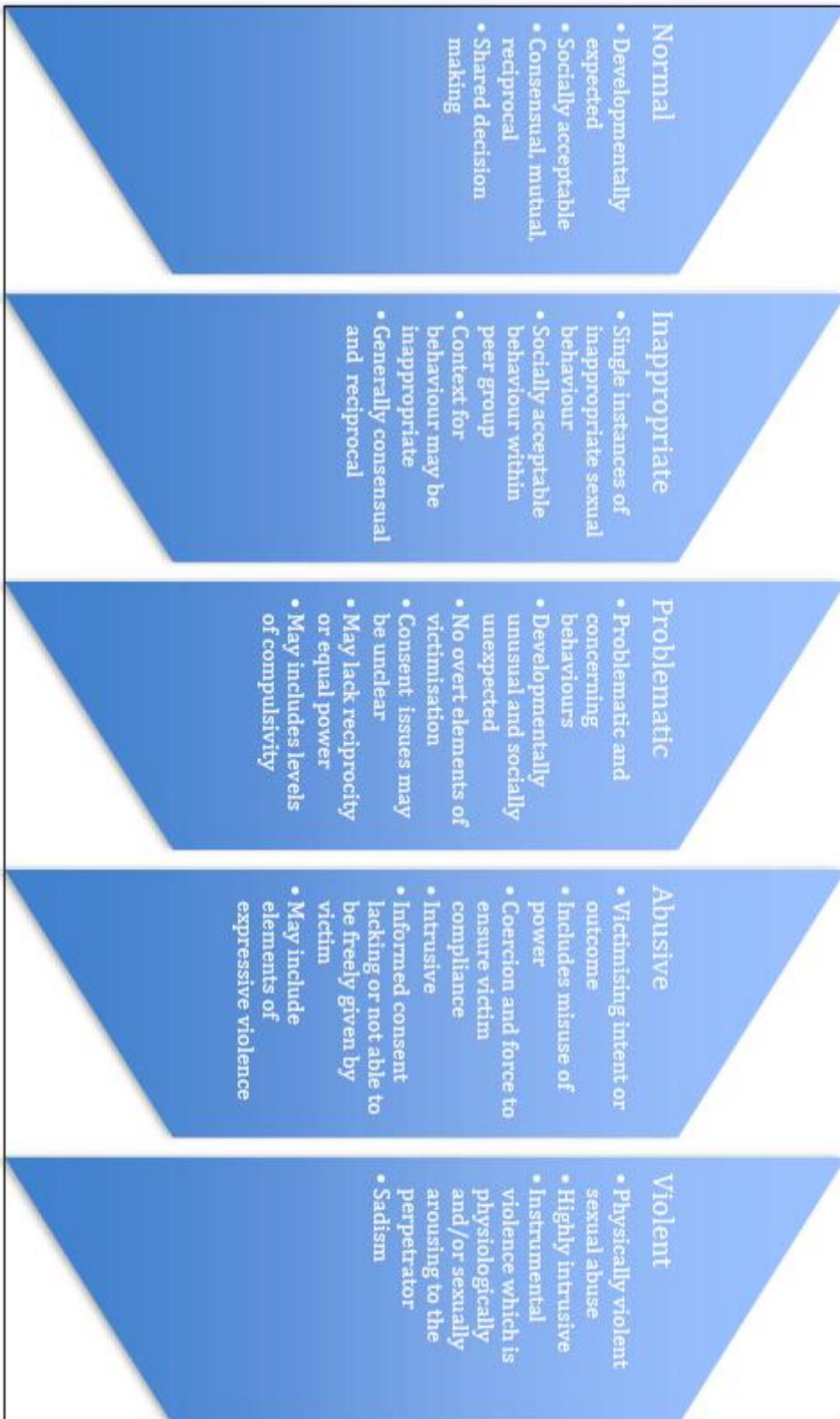
Assessment guidance

- Need for separate social workers for victim and perpetrator, even if in the same household

All Assessments should include:

- Details of the incident/s (including impact on victim/s, context of abusive behaviours, age of victim/s, nature of relationship between the children / young people involved)
- Child and young person's development, family and social circumstances
- Whether the "perpetrator" child / young person acknowledges the alleged behaviour
- Whether there are grounds to suspect that the "perpetrator" child / young person has been abused or there are adults involved in the development of the harmful sexual behaviour
- Details of previous incident/s
- Assessment of child's need and the need for any specialist assessments (including capacity / learning disability)
- Safety of other young people including a Risk management plan for school and one for home
- Accommodation and Education arrangements
- What services need to be provided

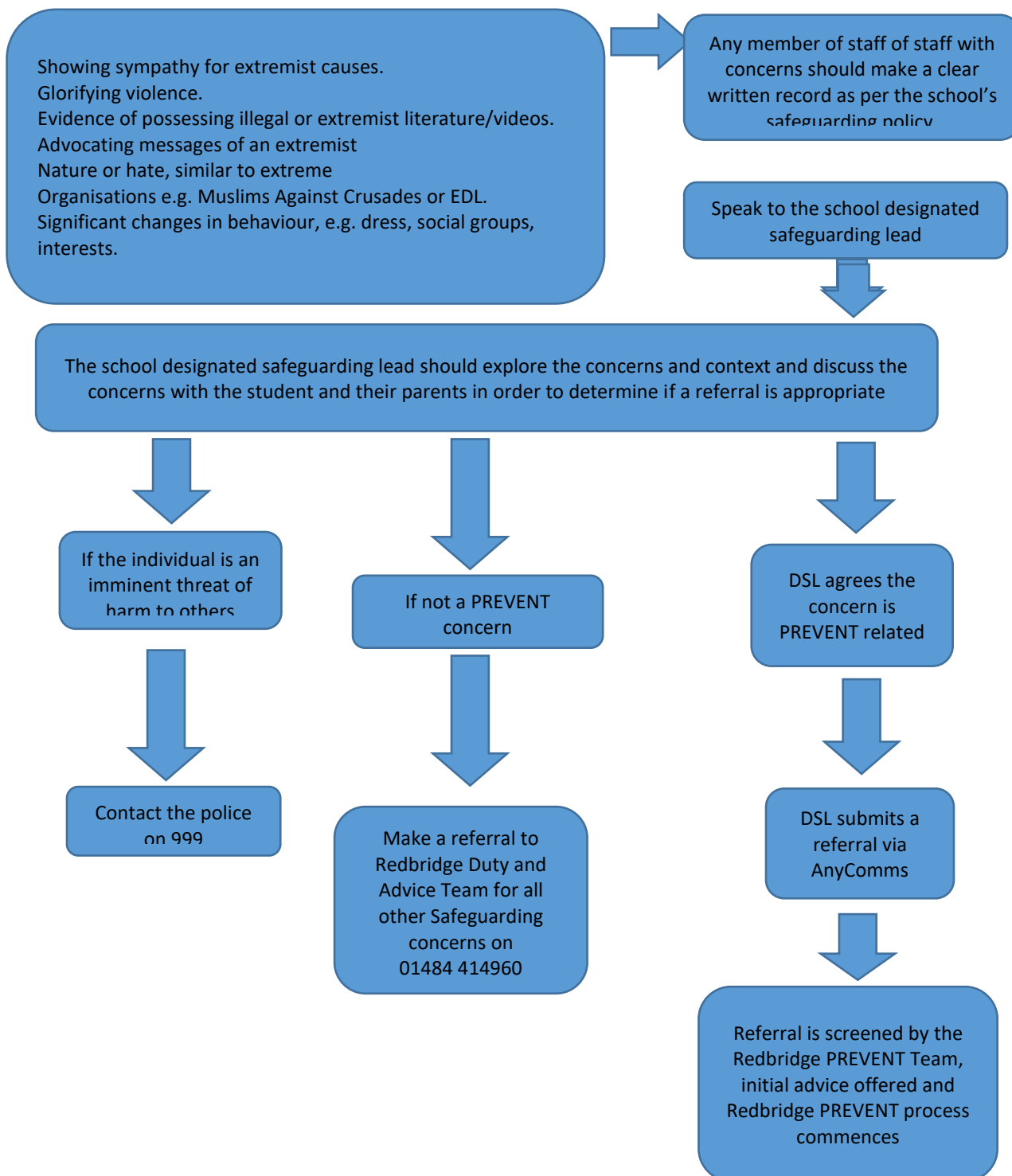
A continuum of children and young people's sexual behaviours (Hackett 2010)



Appendix 8: Radicalisation Response Checklist

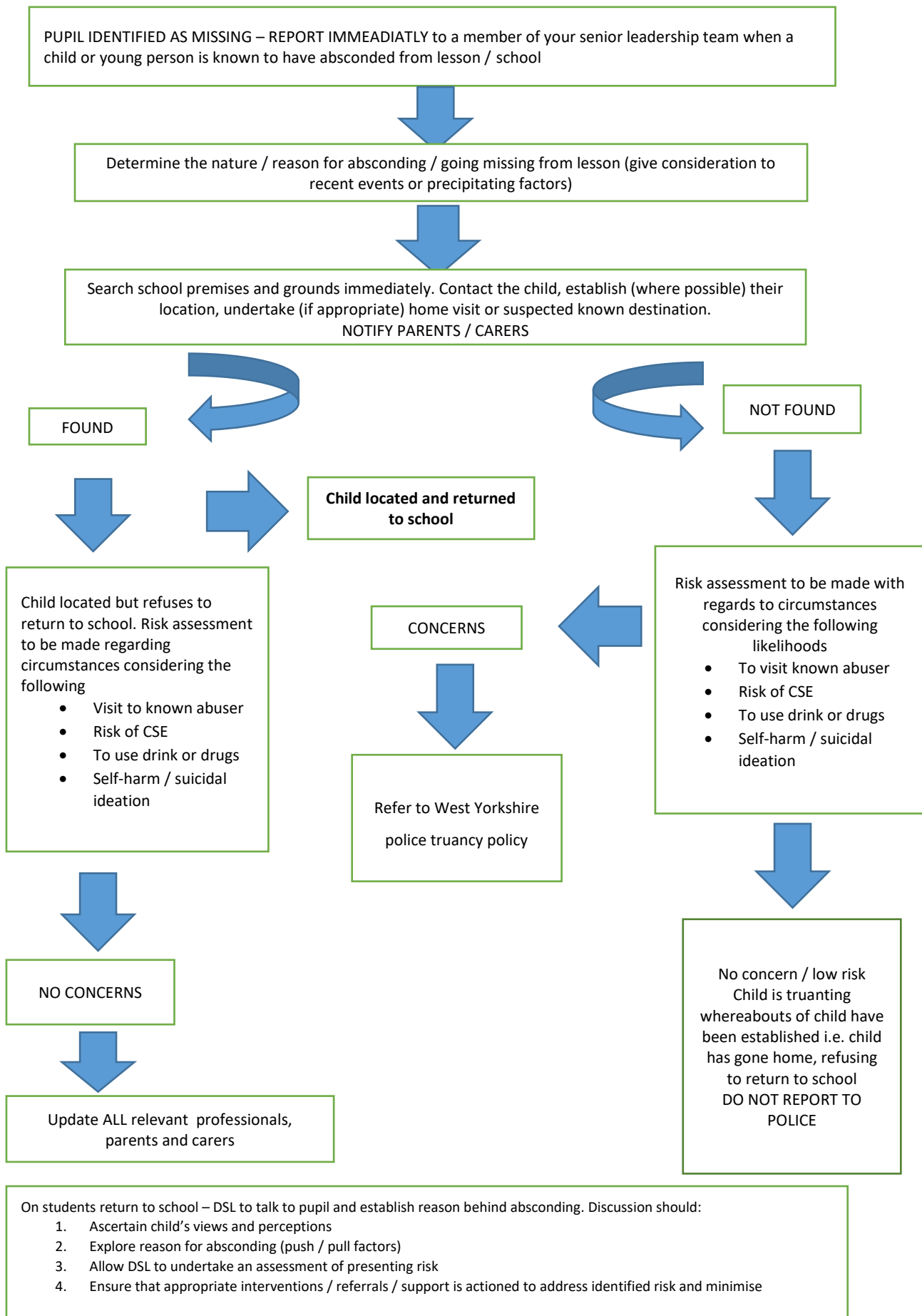
Summary of in-school procedures to follow where there are potential radicalisation concerns about a child/member of staff

Further information and relevant guidance documents referred to, are available electronically from For more information about Prevent in Blackburn , including referral forms and project examples please visit the Blackburn Prevent website <https://www.Blackburn.gov.uk/crime-and-public-safety/anti-terrorism-prevent-and-channel/>



Appendix 9: Missing from School Response Checklist

Referral pathway for reporting pupils missing / absconded during the school day.



Appendix 10
FE Safeguarding Information Sharing Form

Name	
Date of Birth	

Please indicate the nature of the incident or safeguarding issue that you have been concerned about either in the past or currently?					
Physical Abuse	<input type="checkbox"/>	Sexual Abuse	<input type="checkbox"/>	Emotional Abuse	<input type="checkbox"/>
Neglect	<input type="checkbox"/>	Mental ill Health	<input type="checkbox"/>	Suicidal intent	<input type="checkbox"/>
Self-Harm	<input type="checkbox"/>	Forced Marriage	<input type="checkbox"/>	Risk to others	<input type="checkbox"/>
Prevent	<input type="checkbox"/>	CSE	<input type="checkbox"/>	Faith Abuse	<input type="checkbox"/>
Financial Abuse	<input type="checkbox"/>	Domestic Violence	<input type="checkbox"/>	Female Genital Mutilation	<input type="checkbox"/>
Fabricated/Induced Illness	<input type="checkbox"/>	Gangs and Youth Violence	<input type="checkbox"/>	Harmful Sexual Behaviour	<input type="checkbox"/>
Institutional abuse	<input type="checkbox"/>	Missing from home	<input type="checkbox"/>	Sexting	<input type="checkbox"/>
Trafficking	<input type="checkbox"/>	Missing in education	<input type="checkbox"/>	Substance abuse	<input type="checkbox"/>
*Child Looked After	<input type="checkbox"/>				
Other (Please State):					

Are there any current or relevant historical safeguarding concerns?

Please can you provide details of the concerns that you have noted. Please also indicate if the concern was referred to any agencies (i.e. children's social care, adult social care, police) and the outcome of the referral? Feel free to use additional sheets if required.

Safeguarding Issue	Date	What action was taken / Referred to agency?

Please can you give full details including contact details of which agencies are currently working with the student?

Children's Social Care		Adult Social Care	
Probation		Youth Offending Services	
CAMHS		Police	
Other, Please state			

Has the student been subject to a Child in Need Plan, a Child Protection Plan, Early Support Assessment, Education Health Care Plan or Personal Education Plan *Please give further details about the support they are currently receiving?*

--

What areas of support would you recommend the student will need at College?							
Additional Learning Support	<input type="checkbox"/>	Life Skills	<input type="checkbox"/>	Family support	<input type="checkbox"/>	Substance Misuse	<input type="checkbox"/>
Risk of offending or re-offending	<input type="checkbox"/>	Financial <i>*CLA are entitled to bursaries and discretionary funding.</i>	<input type="checkbox"/>	Health Advice	<input type="checkbox"/>	Emotional Wellbeing	<input type="checkbox"/>
Basic Skills	<input type="checkbox"/>	Housing	<input type="checkbox"/>	Counselling	<input type="checkbox"/>	Other, please state below	<input type="checkbox"/>
Risk Management Plan	<input type="checkbox"/>	<i>(Please indicate if this is for risk to others, risk to themselves or relating to sexually harmful behaviour)</i>					
Please can you provide further information concerning any recommendations for support?							

Please can you provide your details below:	
Name:	Position:
Organisation:	Tel No:
Email Address:	Date:

CONSENT TO SHARE INFORMATION PRIOR TO ENROLMENT

To be completed by student

I Insert Name **give consent for the above information to be shared with** Insert name of provider

Date	
Signature of student	

If consent from student has not been sought or you wish the FE provider to contact you directly for further information pertaining to this pupil, please provide a contact name and number of the relevant designated safeguarding lead.

Name of contact	
Telephone number	

Thank you for taking the time to gather the information requested. Please ensure that the completed form is returned securely to the relevant designated safeguarding officer listed below.

18.0 Appendix Three

<p>18. NSPCC Helpline 0808 800 5000 NSPCC whistleblowing helpline: 0800 028 0285</p>	<p>Independent Safeguarding Authority PO BOX 181 Darlington DL1 9FA 01325 953 795</p>
---	---